

25107

LOC RWY 1R
TAMPA INTL (TPA)

MISSED APPROACH: Climb to 500 then climbing right turn to 2000 direct LAL VORTAC and hold.

MISSED APCH FIX

LAKELAND
LAL :
116.0
Chan 107

R-281 101° 281°

649 Δ 473 Δ 334 Δ

94 Δ 186 Δ 155 Δ 253 Δ 149 Δ 240 Δ 621 Δ 630 Δ

LOCALIZER 111.95
I-TWJ :
Chan 56 (Y)

ZELTO
I-TWJ [4.8]

ANAZE
I-TWJ [8.3]

MacDill AFB

ST PETERSBURG
116.4 PIE :
Chan 111

(IF/IAF)
MUWTY INT
I-TWJ [14.3]
LAL [31.2]




3000 242° (31.2) 1667 Δ

R-242

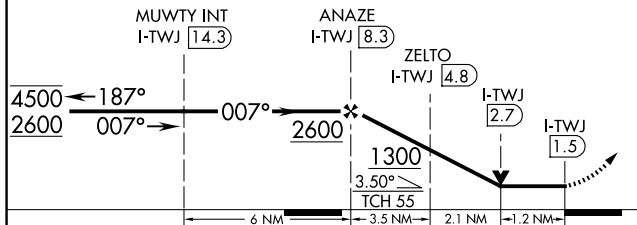
LAKELAND
116.0 LAL :
Chan 107


HOLD 4500 2600
1 min 187°

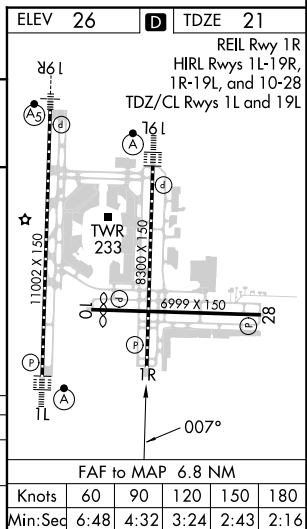
ELEV 26	D	TDZE 21
REIL Rwy 1R		
HIRL Rlys 1L-19R		

500	2000	LAL
		

One Minute Holding Pattern



CATEGORY	A	B	C	D
S-LOC 1R	460/55	439 (500-1)	460-1 $\frac{1}{4}$	439 (500-1 $\frac{1}{4}$)
 CIRCULING	600-1	574 (600-1)	680-1 $\frac{3}{4}$ 654 (700-1 $\frac{3}{4}$)	980-3 954 (1000-3)



TAMPA INTL (TPA)
LOC RWY 1R

SE-3, 10 JUL 2025 to 07 AUG 2025

SE-3, 10 JUL 2025 to 07 AUG 2025