

RNAV 1 - GPS. GPS required.

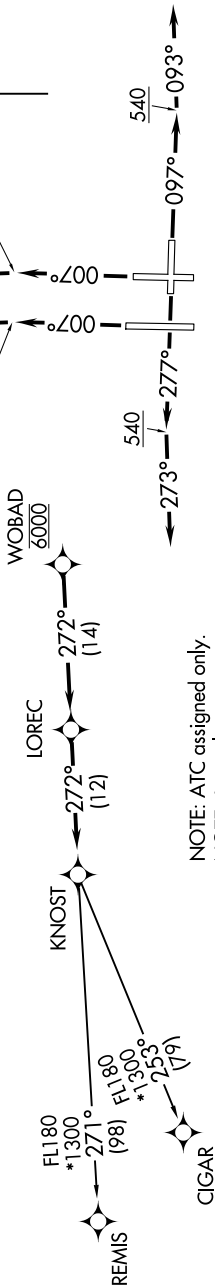
RADAR required.

TOP ALTITUDE:

6000

D-ATIS DEP
128.475
CLNC DEL
133.6
CPDIC
GND CON
121.7 269.4
TAMPA TOWER
119.5 269.4
TAMPA DEP CON
118.8 239.3

TAKEOFF MINIMUMS
Rwys 19L/R: NA - ATC.
Rwys 1L/R, 10, 28: Standard with minimum climb of 500' per NM to 540.



NOTE: Chart not to scale.



DEPARTURE ROUTE DESCRIPTION

TAKEOFF RUNWAYS 1L/R: Climb on heading 007° to 540, then on heading 003° or as assigned by ATC, for vectors to cross WOBAD at 6000 thence
TAKEOFF RUNWAY 10: Climb on heading 097° to 540, then on heading 093° or as assigned by ATC, for vectors to cross WOBAD at 6000 thence
TAKEOFF RUNWAY 28: Climb on heading 277° to 540, then on heading 273° or as assigned by ATC, for vectors to cross WOBAD at 6000 thence

. on track 272° to LOREC, then on track 272° to KNOST. Expect clearance to filed altitude within ten minutes after departure.

CIGAR TRANSITION (KNOST2.CIGAR)
REMIS TRANSITION (KNOST2.REMIS)