

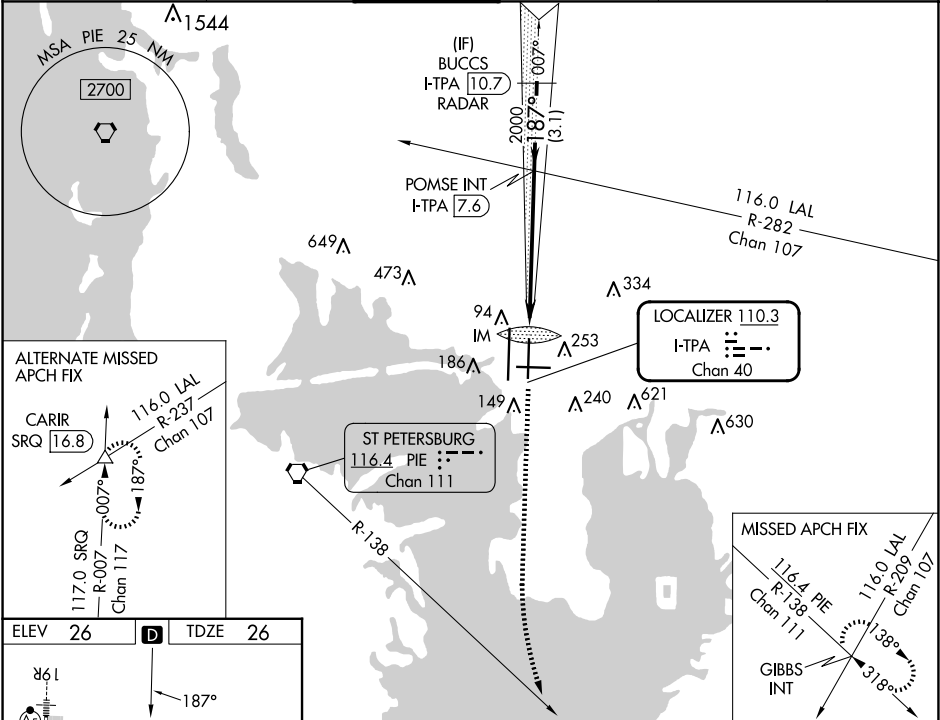


LOC/DME I-TPA 110.3 Chan 40	APP CRS 187°	Rwy Ldg TDZE 26 Apt Elev 26	8300
---	------------------------	---	-------------

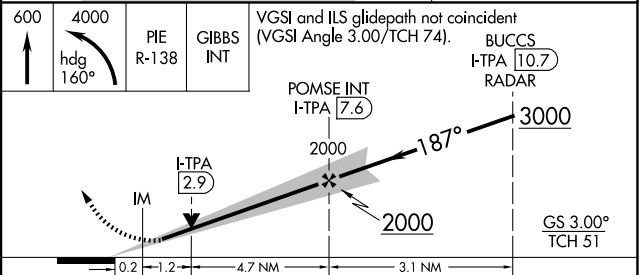
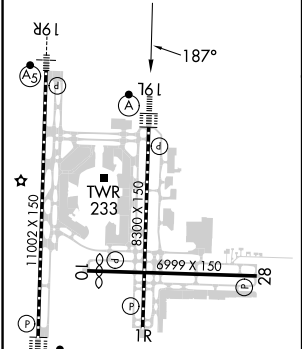
ILS or LOC RWY 19L
TAMPA INTL (TPA)

RADAR required for procedure entry.		ALSF-2 	MISSED APPROACH: Climb to 600 then climbing left turn to 4000 on heading 160° and on PIE VORTAC R-138 to GIBBS INT and hold.
	Simultaneous approach authorized. For inop ALS, increase S-ILS 19L Cat E visibility to RVR 4000 and S-LOC 19L Cat C, D, and E visibility to 1 3/8 SM.		

ARR 126.45	D-ATIS 128.475	DEP 118.5 307.175	TAMPA APP CON 119.5 269.4	TAMPA TOWER 119.5 269.4	GND CON 121.7 269.4	CLNC DEL 133.6	CPDLC
----------------------	--------------------------	-----------------------------	-------------------------------------	-----------------------------------	-------------------------------	--------------------------	-------



ELEV 26	D	TDZE 26
----------------	----------	----------------



CATEGORY	A	B	C	D	E
S-ILS 19L	226/18 200 (200-1/2)				
S-LOC 19L	520/24	494 (500-1/2)	520/50	494 (500-1)	
CIRCLING	600-1	574 (600-1)	680-1 3/4 654 (700-1 3/4)	980-3 954 (1000-3)	NA

SE-3, 10 JUL 2025 to 07 AUG 2025

SE-3, 10 JUL 2025 to 07 AUG 2025