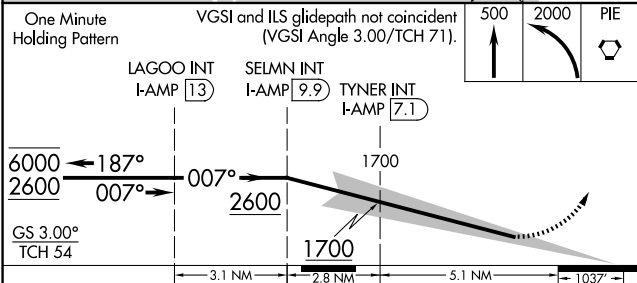
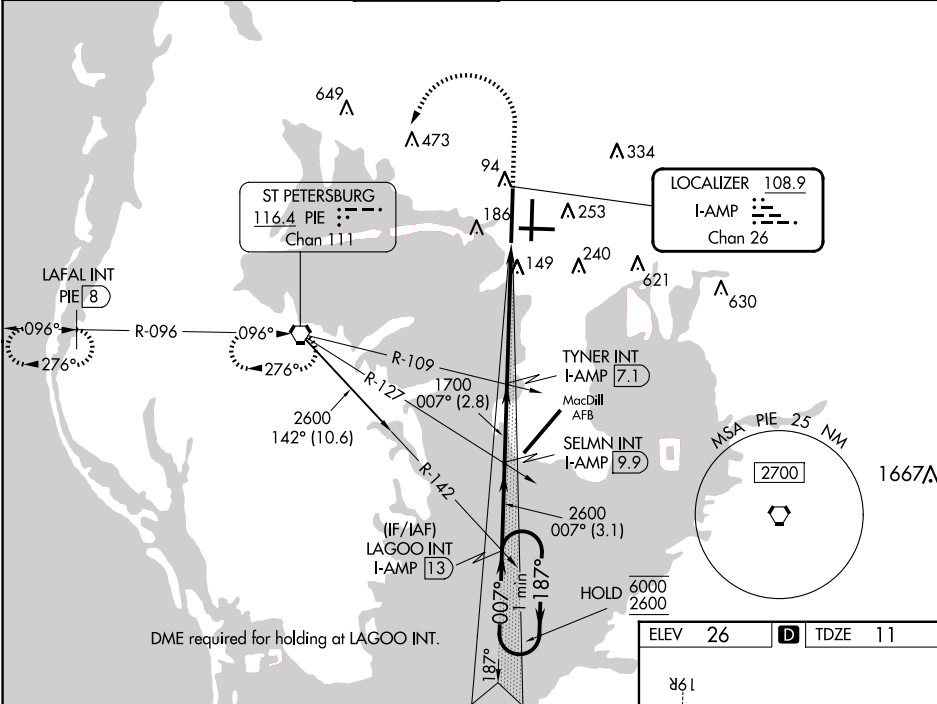


| | | |
|---------------|---------|-------------|
| LOC/DME I-AMP | APP CRS | Rwy Idg |
| 108.9 | 007° | 10800 |
| Chan 26 | | TDZE 11 |
| | | Apt Elev 26 |

ILS RWY 1L (SA CAT I)
TAMPA INTL (TPA)

| | | |
|-------------------------|--------|---|
| DME and RADAR required. | ALSF-2 | MISSED APPROACH: Climb to 500 then climbing left turn to 2000 direct PIE VORTAC and hold, continue climb-in-hold to 2000. (TACAN aircraft climb to 500 then climbing left turn to 2000 direct PIE VORTAC then on PIE VORTAC R-276 to LAFAL INT/PIE 8 DME and hold W, RT, 096° inbound). |
|-------------------------|--------|---|

| | | | | | | | |
|--------|--------|---------|---------------|-------------|-------------|----------|-------|
| ARR | D-ATIS | DEP | TAMPA APP CON | TAMPA TOWER | GND CON | CINC DEL | CPDLC |
| 126.45 | | 128.475 | 118.5 307.175 | 119.5 269.4 | 121.7 269.4 | 133.6 | |



| | | | | |
|----------|----------------------|---|---|---|
| CATEGORY | A | B | C | D |
| S-ILS 1L | RA 155/14 150 DA 161 | | | |

SA CATEGORY I ILS - SPECIAL AIRCREW & AIRCRAFT CERTIFICATION REQUIRED

