

TAMPA, FLORIDA

AL-416 (FAA)

25163

LOC/DME I-TPA 110.3 Chan 40	APP CRS 187°	Rwy Ldg 8300 TDZE 26 Apt Elev 26
---	------------------------	---

ILS RWY 19L (SA CAT I)
TAMPA INTL (TPA)

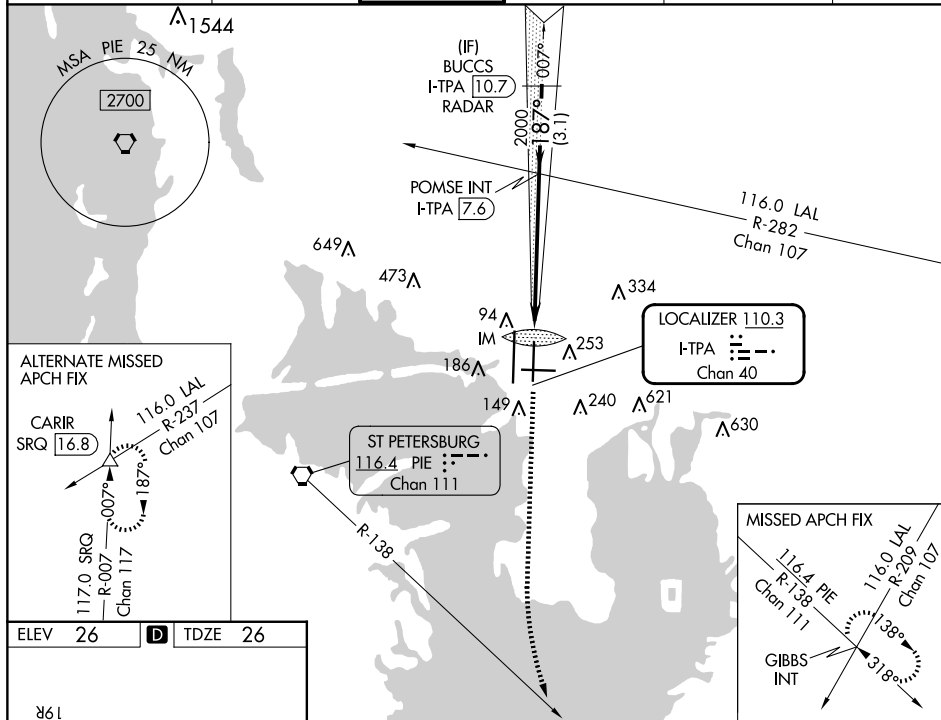
RADAR required for procedure entry.

T	Simultaneous approach authorized.
A	Requires specific OPSPEC, MSPEC, or LOA approval.

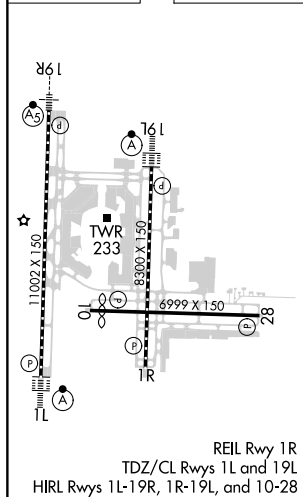
ALSF-2

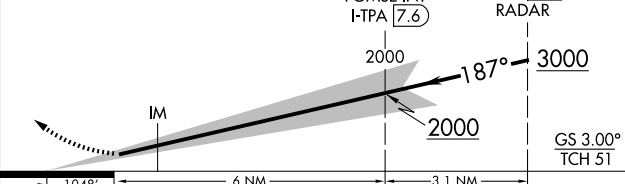
MISSED APPROACH: Climb to 600 then climbing left turn to 4000 on heading 160° and on PIE VORTAC R-138 to GIBBS INT and hold.

ARR	D-ATIS	DEP	TAMPA APP CON	TAMPA TOWER	GND CON	CLNC DEL	CPDLC
126.45		128.475	118.5 307.175	119.5 269.4	121.7 269.4	133.6	



ELEV	26	D	TDZE	26
------	----	----------	------	----



600 ↑	4000 hdg 160°	PIE R-138	GIBBS INT	VGSI and ILS glidepath not coincident (VGSI Angle 3.00°/TCH 74).			
 <p>The diagram illustrates the approach procedure. It shows a 3D perspective of the approach. A solid line represents the 3.00° glide path, and a dashed line represents the 74° TCH. Key points include IM (Initial Manoeuvre point), POMSE INT (Point of Minimum Safe Altitude), and various altitudes (600, 4000, 2000, 3000). Distances are marked as 1.048 NM, 6 NM, and 3.1 NM. A heading of 160° is indicated. The diagram also shows the alignment of the VGSI and ILS glidepaths.</p>				BUCCS I-TPA <u>10.7</u> RADAR			
				POMSE INT I-TPA <u>7.6</u>	2000	187°	3000
						GS 3.00° TCH 51	
CATEGORY		A		B	C	D	
S-ILS 19L		RA 150/14		150	DA 176		

SA CATEGORY I ILS- SPECIAL AIRCREW
& AIRCRAFT CERTIFICATION REQUIRED

TAMPA, FLORIDA
Amdt 42A 12JUN25

27°59'N-82°32'W

TAMPA INTL (TPA)

ILS RWY 19L (SA CAT I)

SE-3, 10 JUL 2025 to 07 AUG 2025