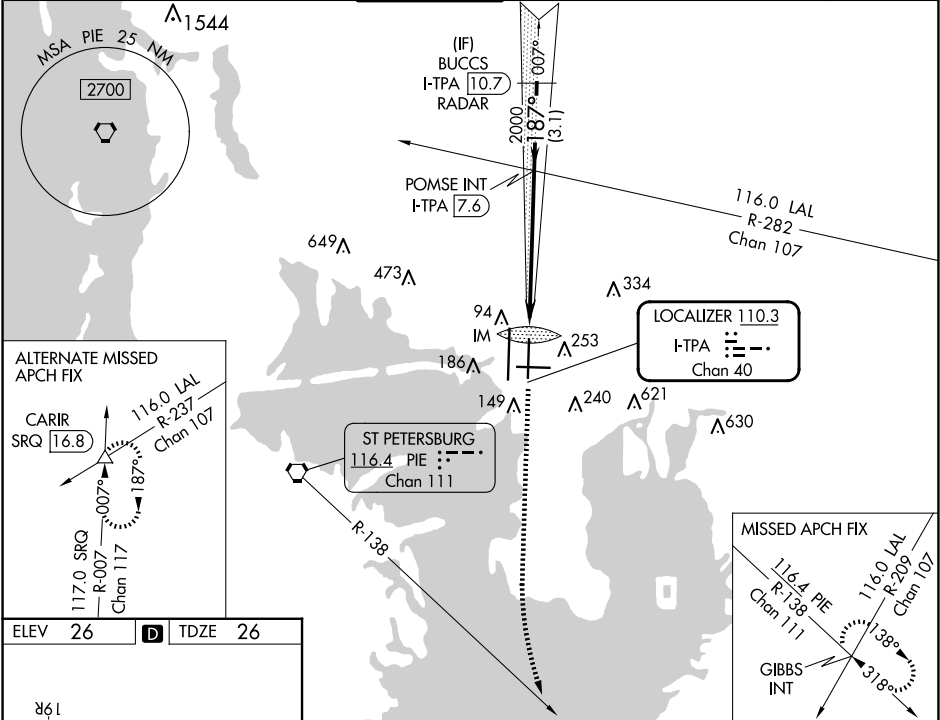


LOC/DME I-TPA 110.3 Chan 40	APP CRS 187°	Rwy Ldg 8300 TDZE 26 Apt Elev 26	ILS RWY 19L (CAT II) TAMPA INTL (TPA)
---	------------------------	---	--

RADAR required for procedure entry.		ALSIF-2 	MISSED APPROACH: Climb to 600 then climbing left turn to 4000 on heading 160° and on PIE VORTAC R-138 to GIBBS INT and hold.
Simultaneous approach authorized. RVR 1000 authorized with specific OPSPEC, MSPEC, or LOA approval and use of autoland or HUD to touchdown.			

ARR 126.45	D-ATIS 128.475	DEP 118.5 307.175	TAMPA APP CON 119.5 269.4	TAMPA TOWER 119.5 269.4	GND CON 121.7 269.4	CLNC DEL 133.6	CPDLC
----------------------	--------------------------	-----------------------------	-------------------------------------	-----------------------------------	-------------------------------	--------------------------	-------



ELEV 26	D	TDZE 26
---------	----------	---------

