

TACAN RWY 34

TACAN TCM Chan 33	APCH CRS 347°	Rwy Idg 10,108 TDZE 322 Arpt Elev 322
-----------------------------	-------------------------	--

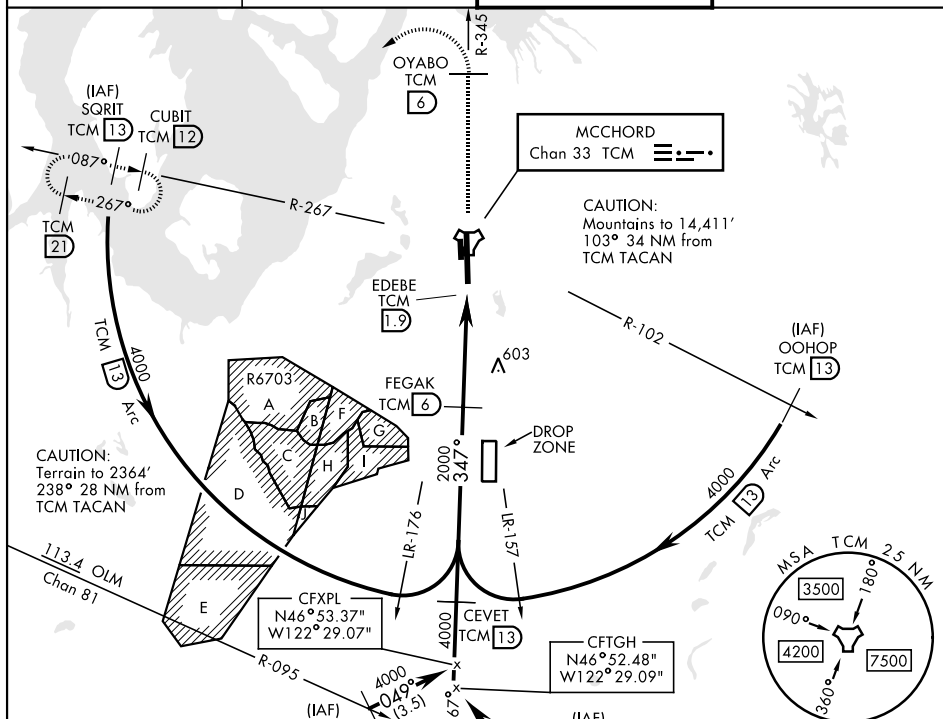
[USAF] MCCHORD FLD (JOINT BASE LEWIS MCCHORD) (KTCM)

T * When ALS inop, increase CAT AB RVR to 55, vis to 1 mile, CAT CD vis to 1½ miles.
 ** Circling not authorized E of Rwy 16-34.

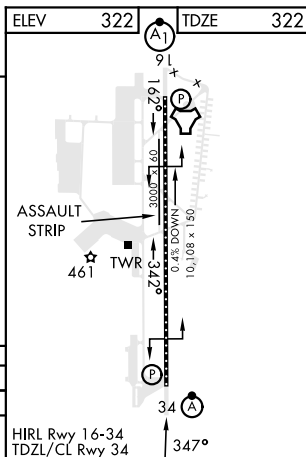
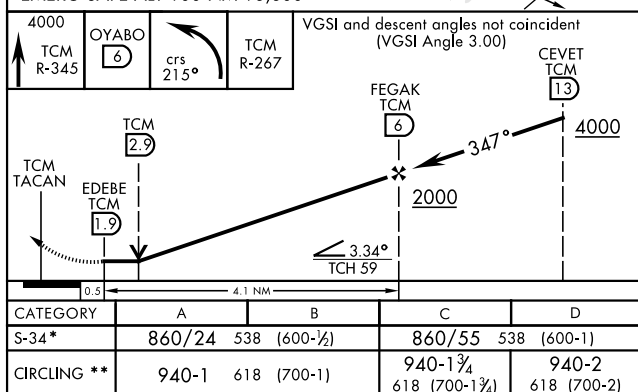


MISSED APPROACH: Climb to 4000 on TCM TACAN R-345 to OYABO, then turn left via 215° course to intercept TCM R-267 to CUBIT and hold. Cross OYABO at or above 3000. Continue climb-in-hold to 4000.

ATIS	SEATTLE APP CON	TOWER	GND CON
135.825 270.1	126.5 377.15	124.8 259.3	118.175 279.65



EMERG SAFE ALT 100 NM 16,600



TACOMA, WASHINGTON

47°08'N-122°29'W

MCCHORD FLD (JOINT BASE LEWIS MCCHORD) (KTCM)

Amdt 5 20APR23

TACAN RWY 34

NW-1, 10 JUL 2025 to 07 AUG 2025

NW-1, 10 JUL 2025 to 07 AUG 2025