

TACAN RWY 16

TACAN TCM Chan 33	APCH CRS 160°	Rwy Idg 10,108 TDZE 286 Arpt Elev 322
-----------------------------	-------------------------	--

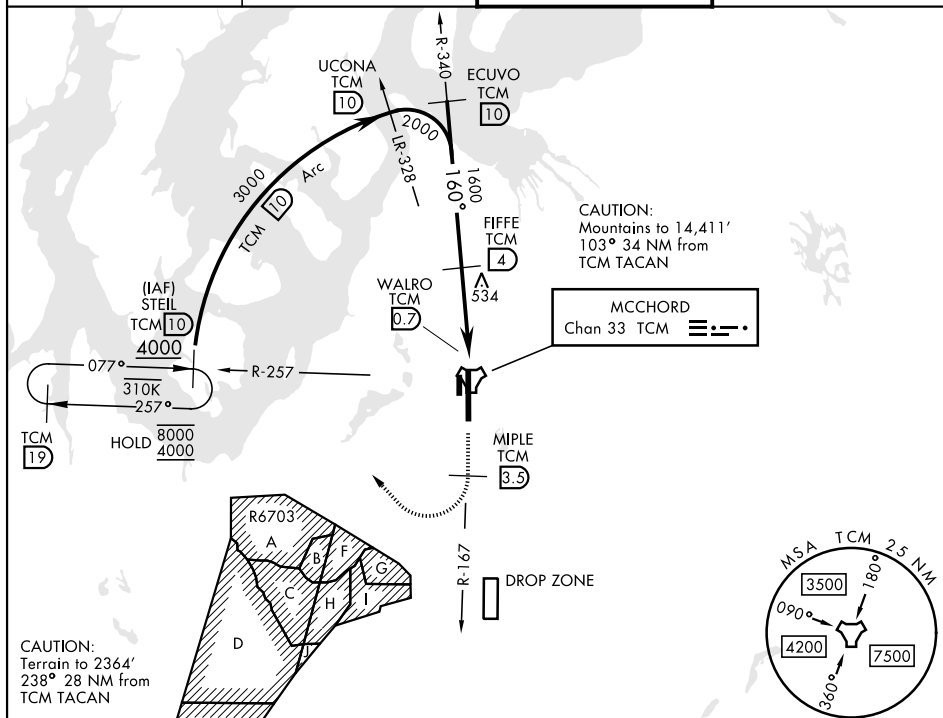
[USAF] MCCHORD FLD (JOINT BASE LEWIS MCCHORD) (KTCM)

- T** * When ALS inop, increase CAT AB RVR to 55, vis to 1 mile, CAT CDE vis to 1 3/8 miles.
** Circling not authorized E of Rwy 16-34.

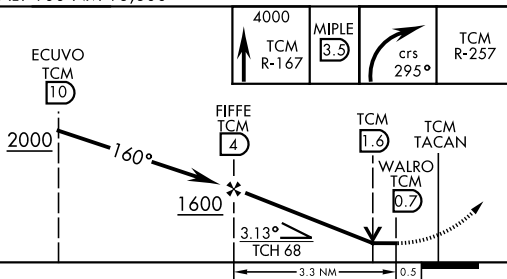


MISSED APPROACH: Climb to 4000 on TCM TACAN R-167. At TCM 3.5 DME turn right via 295° course to intercept TCM R-257 to STEIL and hold, continue climb-in-hold to 4000.

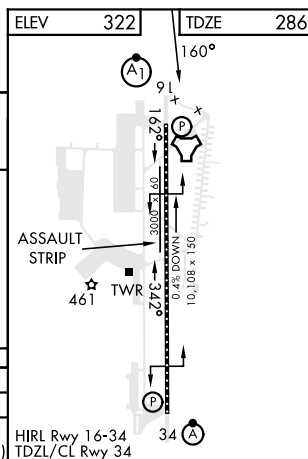
ATIS 135.825 270.1	SEATTLE APP CON 126.5 377.15	TOWER 124.8 259.3	GND CON 118.175 279.65
-----------------------	---------------------------------	----------------------	---------------------------



EMERG SAFE ALT 100 NM 16.600



CATEGORY	A	B	C	D	E
S-16 *	800/24	514 (500-½)	800/55	514	(500-1)
CIRCLING **	940-1 618 (700-1)	940-1½ 618 (700-1¾)	940-2 618 (700-2)	1020-2½ 698 (700-2½)	



TACOMA, WASHINGTON

47°08'N-122°29'W MCCHORD FLD (JOINT BASE LEWIS MCCHORD) (KTCM)

Amdt 4 20APR23

TACAN RWY 16

NW-1, 10 JUL 2025 to 07 AUG 2025