

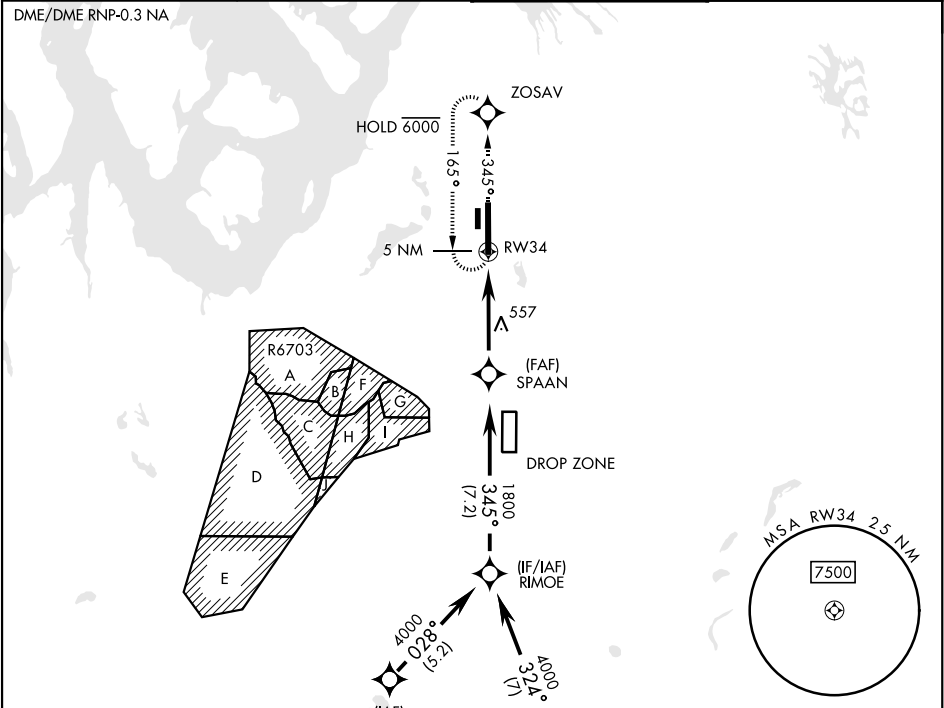
RNAV (GPS) RWY 34

APCH CRS	Rwy Idg	10,108
345°	TDZE	322
	Arpt Elev	322

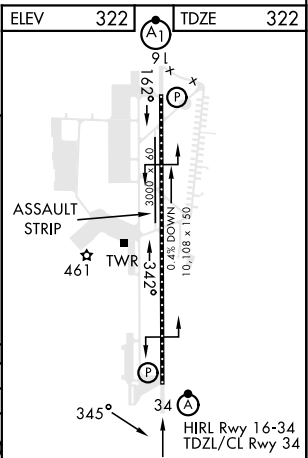
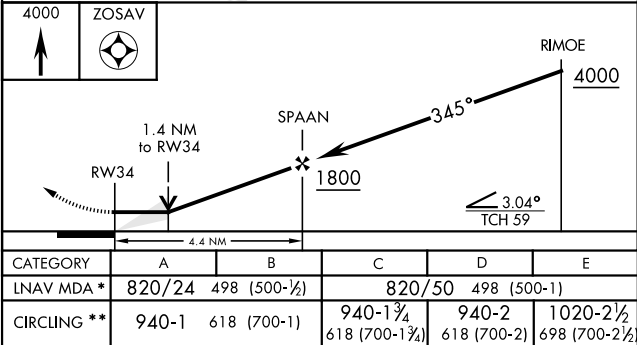
[USAF] MCCHORD FLD (JOINT BASE LEWIS MCCHORD) (KTCM)

RADAR required.	ALSF-2	MISSED APPROACH: Climb to 4000 direct ZOSAV and hold, continue climb in hold to 4000.
▼ * When ALS inop, increase CAT AB RVR to 55, vis to 1 mile; CAT CDE vis to 1½ miles. ** Circling not authorized E of rwy 16-34.		

ATIS 135.825 270.1	SEATTLE APP CON 126.5 377.15	TOWER 124.8 259.3	GND CON 118.175 279.65
-----------------------	---------------------------------	----------------------	---------------------------



EMERG SAFE ALT 100 NM 16,600



RNAV (GPS) RWY 34

NW-1, 10 JUL 2025 to 07 AUG 2025

NW-1, 10 JUL 2025 to 07 AUG 2025