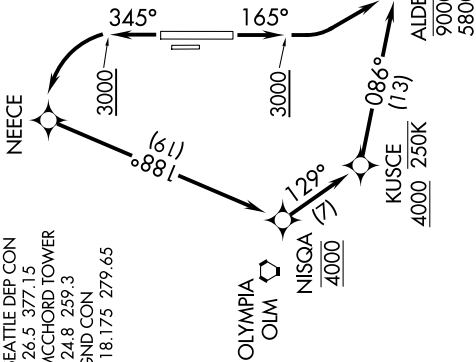


NW-1, 10 JUL 2025 to 07 AUG 2025

D-ATIS
135.825 270.1
SEATTLE DEP CON
126.5 377.15
MCCHORD TOWER
124.8 259.3
GND CON
118.175 279.65



DEPARTURE ROUTE DESCRIPTION

TAKEOFF RUNWAY 16: Climb on heading 165° to 3000, then climbing left turn direct to cross ALDER at or above 5800 and at or below 9000, then on track 111° to MOCAA, thence

TAKEOFF RUNWAY 34: Climb on heading 345° to 3000, then climbing left turn direct NEECE, then on track 188° to cross NISQA at 4000, then on track 129° to cross KUSCE at or above 4000 and at or below 250K, then on track 086° to cross ALDER at or above 5800 and at or below 9000, then on track 111° to MOCAA, thence

. . . . (transition). Maintain 9000, expect filed altitude five minutes after departure.

BAKER CITY TRANSITION (MOCAA4.BKE)

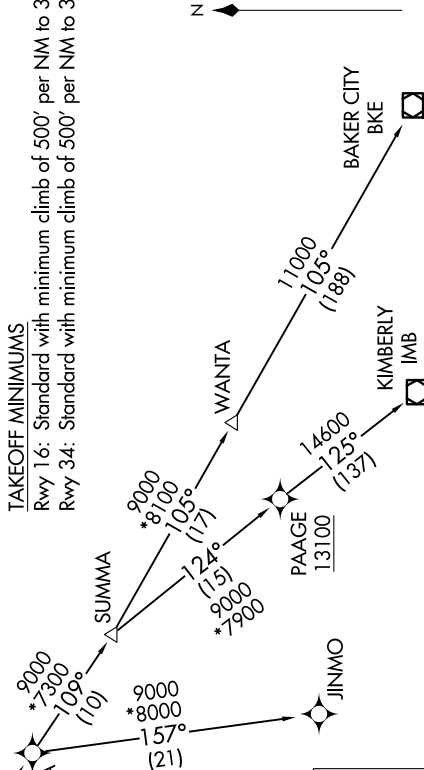
JINMO TRANSITION (MOCAA4.JINMO)

KIMBERLY TRANSITION (MOCAA4.IMB)

TAKEOFF MINIMUMS

Rwy 16: Standard with minimum climb of 500' per NM to 3000.

Rwy 34: Standard with minimum climb of 500' per NM to 3000.



NOTE: RNAV 1.
NOTE: GPS required.
NOTE: Chart not to scale.

TOP ALTITUDE:

BAKER CITY and JINMO Transitions: 9000
KIMBERLY Transition: 13100

MOCAA FOUR DEPARTURE (RNAV)

(MOCAA4.MOCAA) 27JAN22

MCCHORD FLD (JOINT BASE LEWIS-MCCHORD) (KTCM)

TACOMA, WASHINGTON

NW-1, 10 JUL 2025 to 07 AUG 2025