

ILS or LOC RWY 34

LOC I-TCM <u>108.5</u>	APCH CRS 345°	Rwy Idg 10,108 TDZE 322 Arpt Elev 322
----------------------------------	-------------------------	--

[USAF] MCCHORD FLD (JOINT BASE LEWIS MCCHORD) (KTCM)

RADAR or DME required.

T * When ALS inop, increase RVR to 40, vis to $\frac{3}{4}$ mile.
When TDZ/CL lights inop increase RVR to 24.
** When ALS inop, increase CAT AB RVR to 55,
vis to 1 mile. CAT CD vis to $1\frac{1}{2}$ miles.

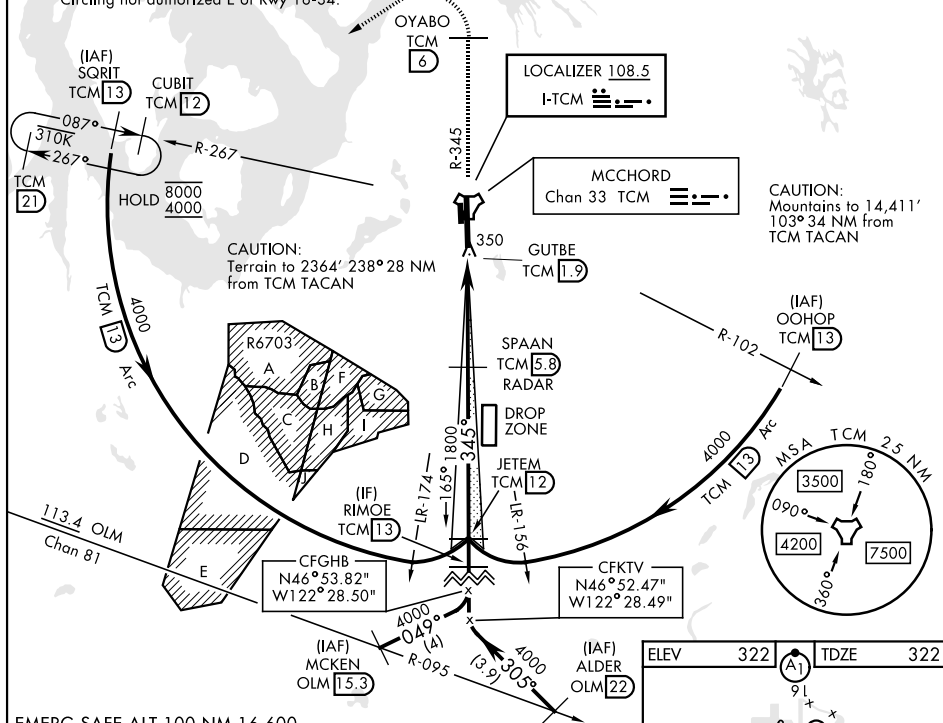
ALSF-2



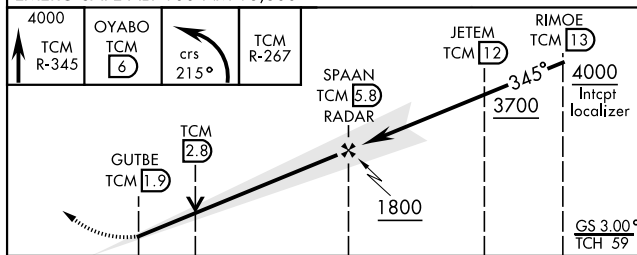
MISSED APPROACH: Climb to 4000 on TCM TACAN R-345 to OYABO, then turn left via 215° course to intercept TCM R-267 to CUBIT and hold, continue climb-in-hold to 4000. Cross OYABO at or above 3000.

ATIS	SEATTLE APP CON	TOWER	GND CON
135.825 270.1	126.5 377.15	124.8 259.3	118.175 279.65

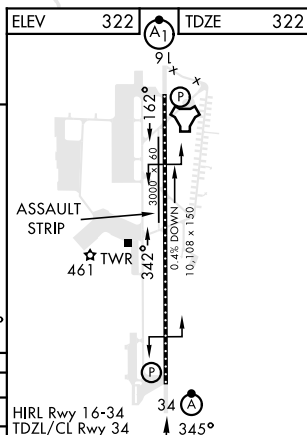
***Circling not authorized E of Rwy 16-34.



EMERG SAFE ALT 100 NM 16,600



	0.5 NM	3.9 NM		
CATEGORY	A	B	C	D
S-ILS 34*	522/18 200 (200-½)			
S-LOC 34**	860/40 538 (600-¾)	860/55 538 (600-1)		
CIRCLING***	940-1 618 (700-1)	940-1 618 (700-1¾)	940-2 618 (700-2)	



HIRL Rwy 16-34
TDZL/CL Rwy 34

FAF to MAP 3.9 NM

Knots	60	90	120	150	180
Min:Sec	3:54	2:36	1:57	1:34	1:18

ILS or LOC RWY 34