

ILS or LOC RWY 16

LOC I-MAR <u>109.9</u>	APCH CRS 165°	Rwy Idg 10,108 TDZE 286 Arpt Elev 322
----------------------------------	-------------------------	--

[USAF] MCCHORD FLD (JOINT BASE LEWIS MCCHORD) (KTCM)

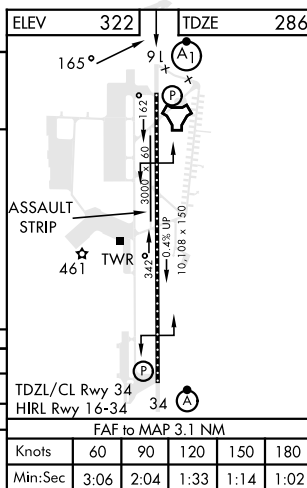
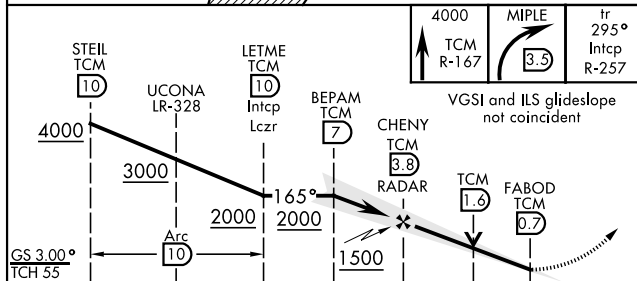
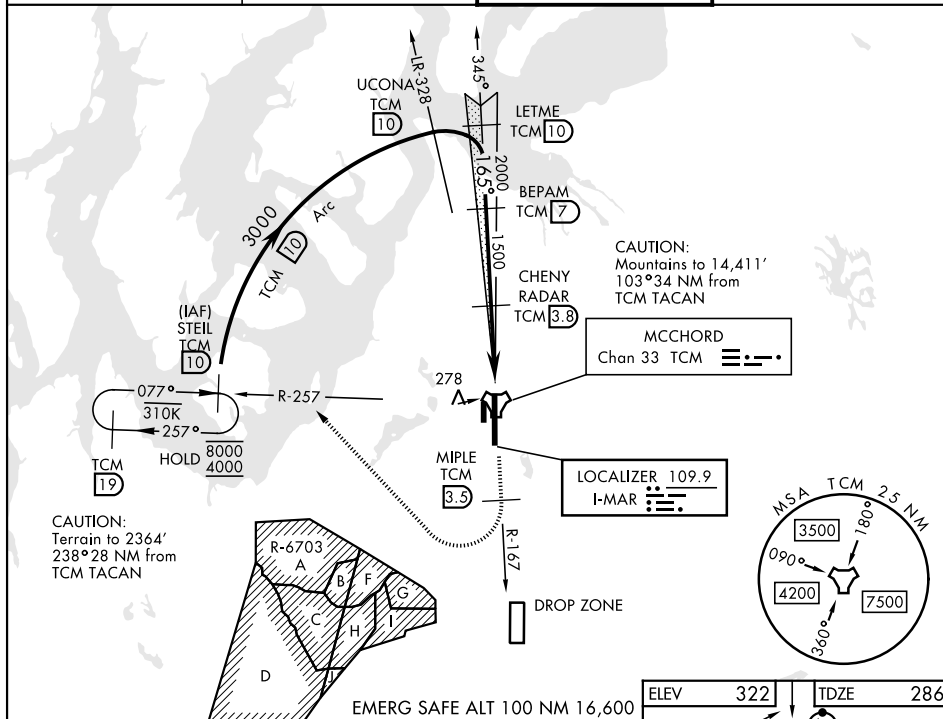
RADAR or DME required.

T * When ALS inop, increase RVR to 45, vis to $\frac{7}{8}$ mile.
 ** When ALS inop, increase CAT AB RVR to 55, vis to 1 mile, CAT CDE vis to $1\frac{1}{8}$ miles.
 *** Circling not authorized E of Rwy 16-34.



MISSED APPROACH: Climb to 4000 on TCM TACAN R-167. At 3.5 DME turn right via 295° course to intercept TCM R-257 to STEIL and hold. Continue climb in hold to 4000.

ATIS	SEATTLE APP CON	TOWER	GND CON
135.825 270.1	126.5 377.15	124.8 259.3	118.175 279.65



CATEGORY	A	B	C	D	E
S-ILS 16 *	601/40		315	(300-¾)	
S-LOC 16 **	860/40	574 (600-¾)	860-1¼	574	(600-1¼)
CIRCLING ***	940-1	618 (700-1)	940-1 ¾ 618 (700-1¾)	940-2 618 (700-2)	1020-2½ 698 (700-2½)

TACOMA, WASHINGTON

47°08'N-122°29'W MCCHORD FLD (JOINT BASE LEWIS MCCHORD) (KTCM)

Amdt 5 20APR23

ILS or LOC RWY 16