

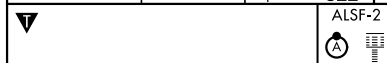
TACOMA, WASHINGTON

ILS RWY 34 (CAT II)

LOC I-TCM <u>108.5</u>	APCH CRS 345°	Rwy Idg 10,108 TDZE 322 Arpt Elev 322
----------------------------------	-------------------------	--

[USAF]

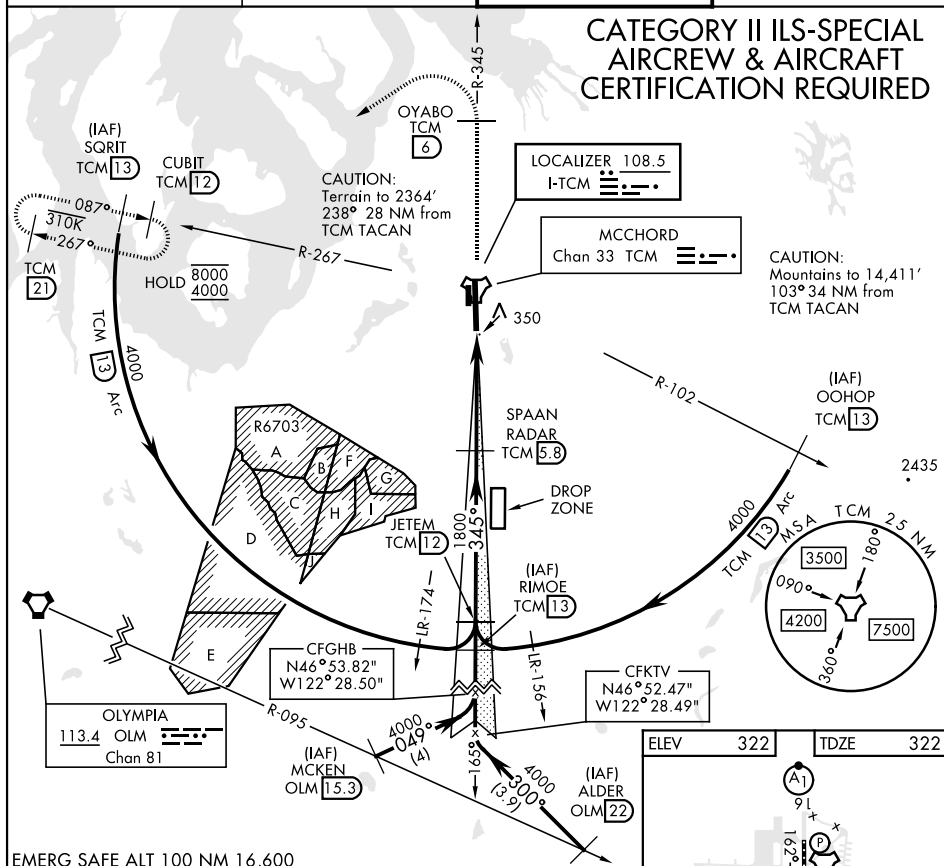
MCCHORD FLD (JOINT BASE LEWIS MCCHORD) (KTCM)



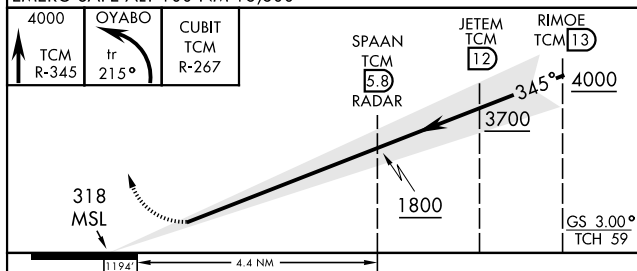
MISSED APPROACH: Climb to 4000 on TCM TACAN R-345 to OYABO, then turn left via 215° course to intercept TCM R-267 to CUBIT and hold, continue climb in hold to 4000. Cross OYABO at or above 3000.

ATIS 135.825 270.1	SEATTLE APP CON 126.5 377.15	TOWER 124.8 259.3	GND CON 118.175 279.65
-----------------------	---------------------------------	----------------------	---------------------------

CATEGORY II ILS-SPECIAL
AIRCREW & AIRCRAFT
CERTIFICATION REQUIRED

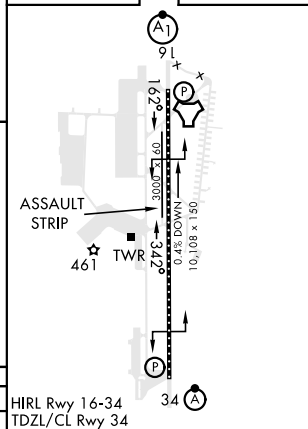


EMERG SAFE ALT 100 NM 16,600



CATEGORY	A	B	C	D	E
S-ILS 34	RA 139/12		100	DA 422	

ELEV	322		TDZE	322
------	-----	--	------	-----



TACOMA, WASHINGTON

47°08'N-122°29'W

MCCHORD FLD (JOINT BASE LEWIS MCCHORD) (KTCM)

Amdt 4 10SEP20

ILS RWY 34 (CAT II)

NW-1, 10 JUL 2025 to 07 AUG 2025

NW-1, 10 JUL 2025 to 07 AUG 2025