

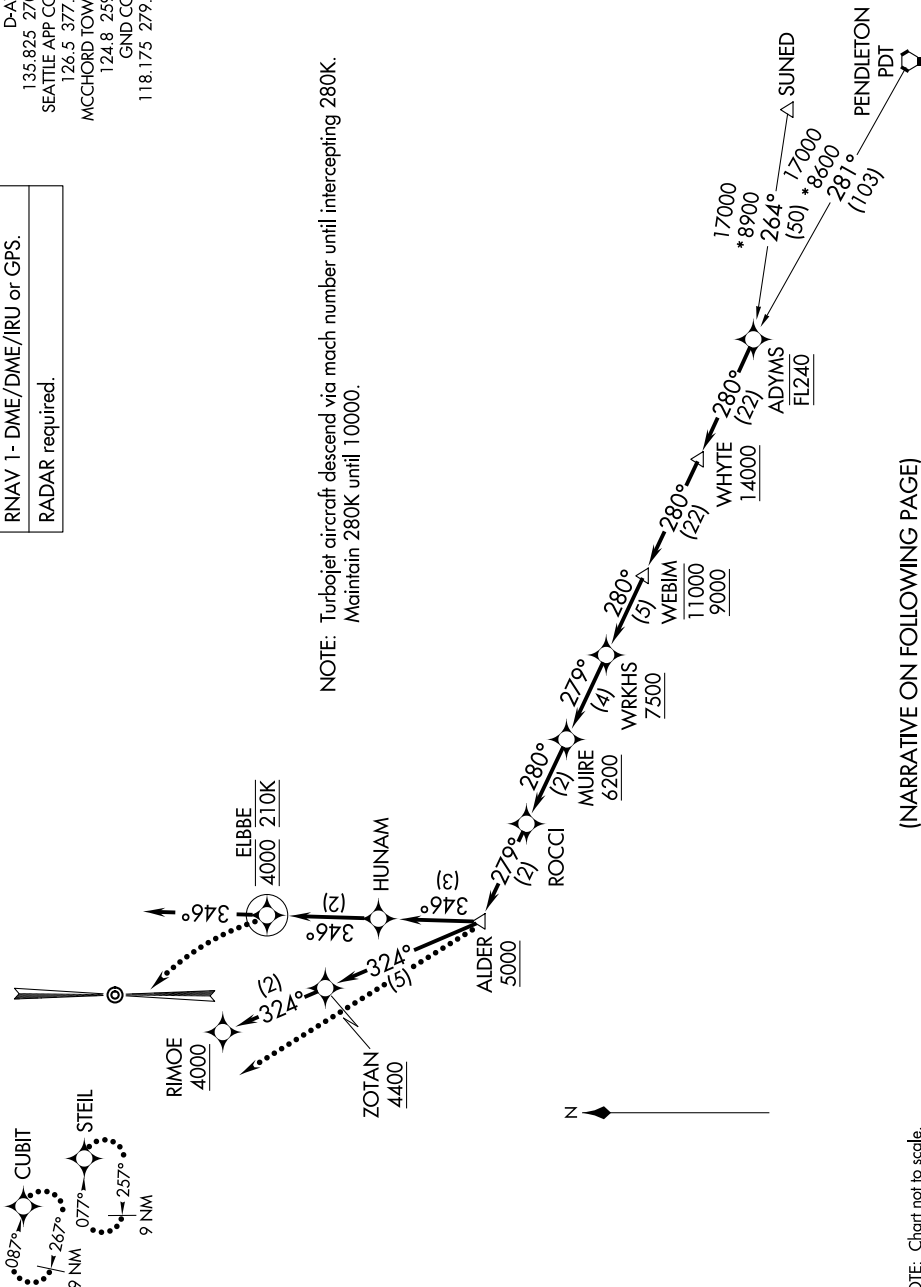
ADYMS THREE ARRIVAL (RNAV)

MCCHORD FLD (JOINT BASE LEWIS-MCCHORD) (KTCM)
AL-414 (FAA) TACOMA, WASHINGTON

D-ATIS
135.825 270.1
SEATTLE APP CON
126.5 377.15
MCCHORD TOWER
124.8 259.3
GND CON
118.175 279.65

RNAV 1 - DME/DME/IRU or GPS.
RADAR required.

NOTE: Turbojet aircraft descend via mach number until intercepting 280K.
Maintain 280K until 10000.



NOTE: Chart not to scale.

(NARRATIVE ON FOLLOWING PAGE)

NW-1, 10 JUL 2025 to 07 AUG 2025

ADYMS THREE ARRIVAL (RNAV)
(ADYMS.ADYMS3) 27JAN22

TACOMA, WASHINGTON
MCCHORD FLD (JOINT BASE LEWIS-MCCHORD) (KTCM)