

APCH CRS	Rwy Idg	6124
151°	TDZE	300
	Arprt Elev	301

- (USA)

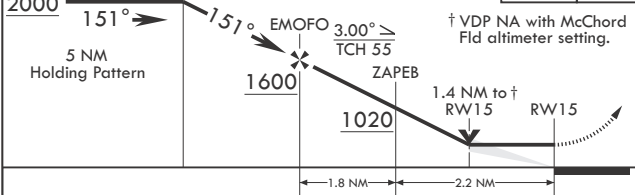
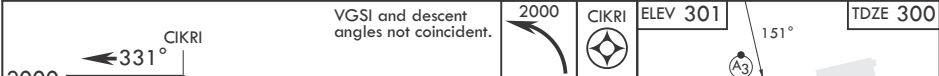
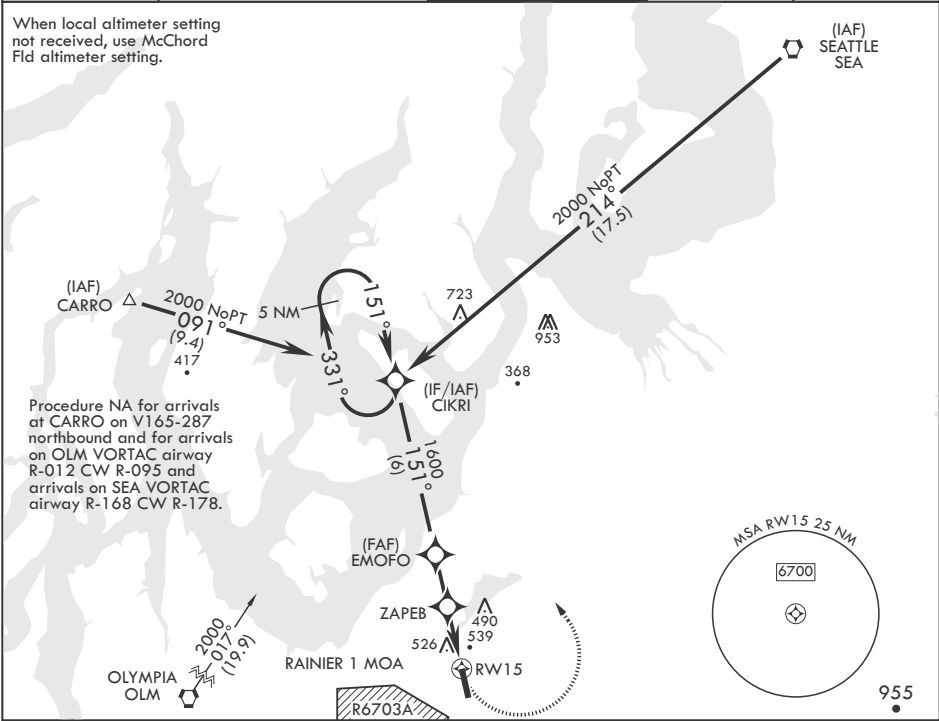
RNAV (GPS) RWY 15

GRAY AAF (JOINT BASE LEWIS MCCHORD) (KGRF)

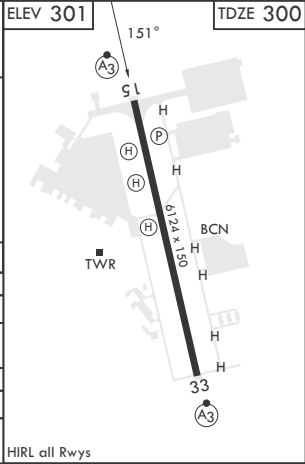
RNP APCH	SSALR	MISSED APPROACH: Climbing left turn to 2000 direct CIKRI and hold.
▼ * Circling not authorized W of Rwy 15-33.		

ATIS	SEATTLE APP CON/DEP CON	TOWER ★	GND CON	CLNC DEL
124.65 306.2	120.1 290.9	119.325 (CTAF) 256.8	121.9 290.2	121.9 290.2

When local altimeter setting not received, use McChord Fld altimeter setting.



CATEGORY	A	B	C	D
LNAV MDA	800/24	500 (500-½)	800/50	500 (500-1)
CIRCLING*	840-1	539 (600-1)	840-1½ 539 (600-1½)	920-2 619 (700-2)
MC CHORD FLD ALTIMETER SETTING MINIMUMS				
LNAV MDA	820/24	520 (600-½)	860-1½ 559 (600-1½)	940-2 639 (700-2)
CIRCLING*	860-1	559 (600-1)	860-1½ 559 (600-1½)	940-2 639 (700-2)



RNAV (GPS) RWY 15

NW-1, 10 JUL 2025 to 07 AUG 2025

NW-1, 10 JUL 2025 to 07 AUG 2025