

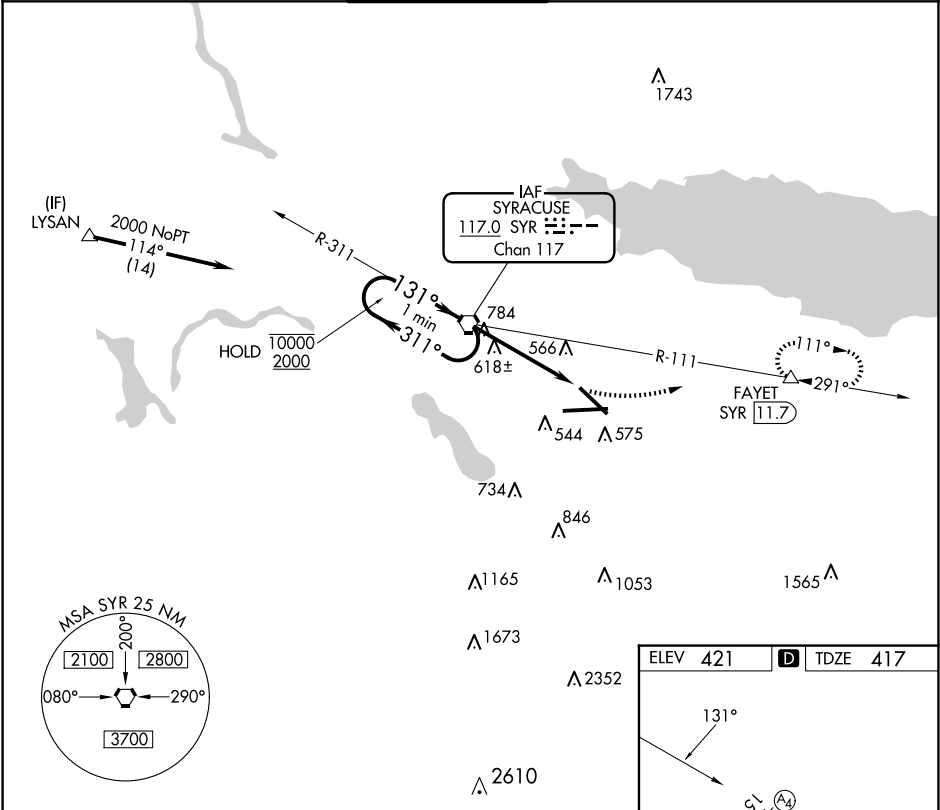
VORTAC SYR	APP CRS	Rwy Idg	7499
117.0	131°	TDZE	417
Chan 117		Apt Elev	421

VOR RWY 15

SYRACUSE HANCOCK INTL (SYR)

DME required.	MALS	MISSED APPROACH: Climbing left turn to 3200 on SYR VORTAC R-111 to FAYET/11.7 DME and hold, continue climb-in-hold to 3200.
<div><div></div><div>Rwy 15 helicopter visibility reduction below ¾ SM NA. For inop ALS, increase Cat C/D visibility to 1¾ SM.</div></div>	<div><div>A4</div><div></div></div>	

ATIS	SYRACUSE APP CON	SYRACUSE TOWER	GND CON	CLNC DEL
124.225	126.125 269.125	120.3 239.0	121.7 348.6	125.05 257.775



One Minute Holding Pattern		SYR VORTAC	3200	SYR R-111	FAYET
10000 2000		311° 131°	2000	131°	△
		3.09° TCH 53	3.3 NM	1.4	
CATEGORY	A	B	C	D	
S-15	920-¾	503 (500-¾)	920-1¼	503 (500-1¼)	
CIRCLING	920-1	499 (500-1)	1020-1½	1180-2½	
			599 (600-1½)	759 (800-2½)	

ELEV 421	TDZE 417
131°	
SYR R-111	
FAYET	
TWR	
7499 X 150	
0.3% UP	
9013 X 150	
TDZ/CL Rwy 28	
HIRL Rwy 10-28 and 15-33	
FAF to MAP 4.7 NM	
Knots	60 90 120 150 180
Min:Sec	4:42 3:08 2:21 1:53 1:34