

VORTAC SYR <b>117.0</b> Chan <b>117</b>	APP CRS <b>314°</b>	Rwy Idg TDZE Apt Elev	<b>7499</b> <b>409</b> <b>421</b>
-----------------------------------------------	------------------------	-----------------------------	-----------------------------------------

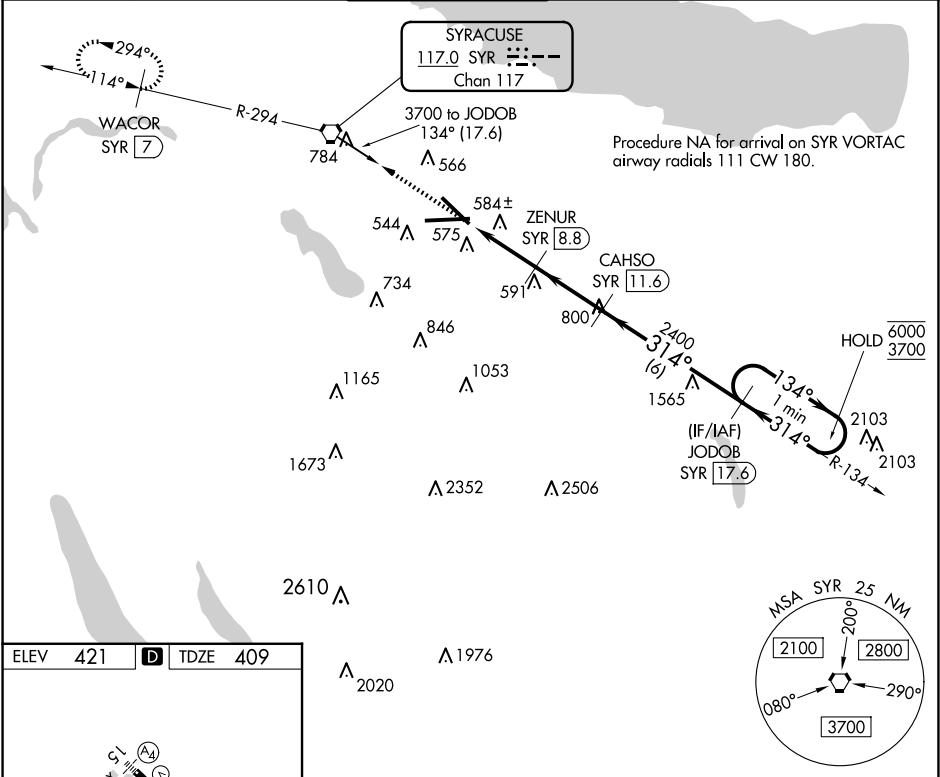
TACAN RWY 33  
SYRACUSE HANCOCK INTL (SYR)

**V** Rwy 33 helicopter visibility reduction below ¾ SM NA.

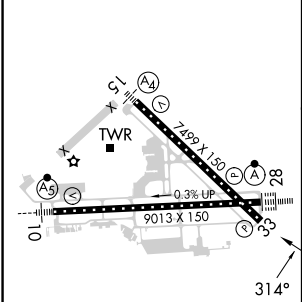
**A**

MISSED APPROACH: Climb to 3000 direct SYR VORTAC and on SYR VORTAC R-294 to WACOR/7 DME and hold.

ATIS <b>124.225</b>	SYRACUSE APP CON <b>126.125 269.125</b>	SYRACUSE TOWER <b>120.3 239.0</b>	GND CON <b>121.7 348.6</b>	CLNC DEL <b>125.05 257.775</b>
------------------------	--------------------------------------------	--------------------------------------	-------------------------------	-----------------------------------



ELEV 421	<b>D</b>	TDZE 409
----------	----------	----------



TDZ/CL Rwy 28  
HIRL Rws 10-28 and 15-33

3000	SYR	SYR R-294	WACOR SYR 7	CAHSO SYR 11.6	JODOB SYR 17.6	One Minute Holding Pattern
			ZENUR SYR 8.8			
	SYR 5.9	SYR 7.1	3.19°	TCH 53	2400	134° → 6000 ← 314° 3700
	1.2	1.7 NM	2.8 NM	6 NM		
CATEGORY	A	B	C	D		
S-33	840/55	431 (500-1)	840-1¼	431 (500-1¼)		
CIRCLING	900-1 479 (500-1)	920-1 499 (500-1)	1020-1½ 599 (600-1½)	1180-2½ 759 (800-2½)		

NE-2, 10 JUL 2025 to 07 AUG 2025

NE-2, 10 JUL 2025 to 07 AUG 2025