

WAAS CH 40017 W10A	APP CRS 100°	Rwy Idg 9013 TDZE 421 Apt Elev 421
--	------------------------	---

RNAV (GPS) Z RWY 10

SYRACUSE HANCOCK INTL (SYR)

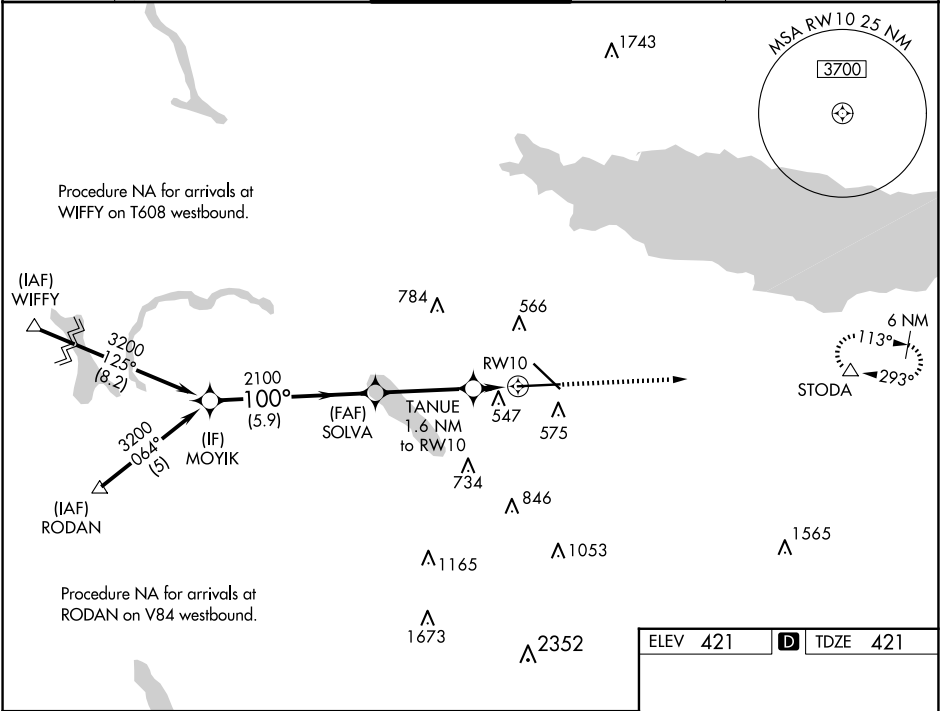
RNP APCH - GPS.

For uncompensated Baro-VNAV systems, LNAV/VNAV NA below -19°C or above 54°C. For inop ALS, increase LNAV Cats C/D visibility to RVR 5500. # RVR 1800 authorized with use of FD or AP or HUD to DA.

MALSR

MISSED APPROACH: Climb to 3200 direct STODA and hold, continue climb-in-hold to 3200.

ATIS 124.225	SYRACUSE APP CON 126.125 269.125	SYRACUSE TOWER 120.3 239.0	GND CON 121.7 348.6	CLNC DEL 125.05 257.775
------------------------	--	--------------------------------------	-------------------------------	-----------------------------------



MOYIK <u>3200</u>		SOLVA 2100		TANUE 1.6 NM to RW10		3200 ↑	STODA △
GP 3.00° TCH 55°		2100		*980		*LNAV only *1 NM to RW10	
5.9 NM		3.5 NM		0.6 NM		1 NM	
CATEGORY	A	B	C	D			
LPV DA#	621/24 200 (200-½)						
LNAV/ VNAV DA	846/40 425 (500-¾)						
LNAV MDA	800/24 379 (400-½)			800/35 379 (400-¾)			
CIRCLING	900-1 479 (500-1)	920-1 499 (500-1)	1020-1½ 599 (600-1½)	1180-2½ 759 (800-2½)			

ELEV 421 TDZE 421

TDZ/CL Rwy 28
HIRL Rwy 10-28 and 15-33