

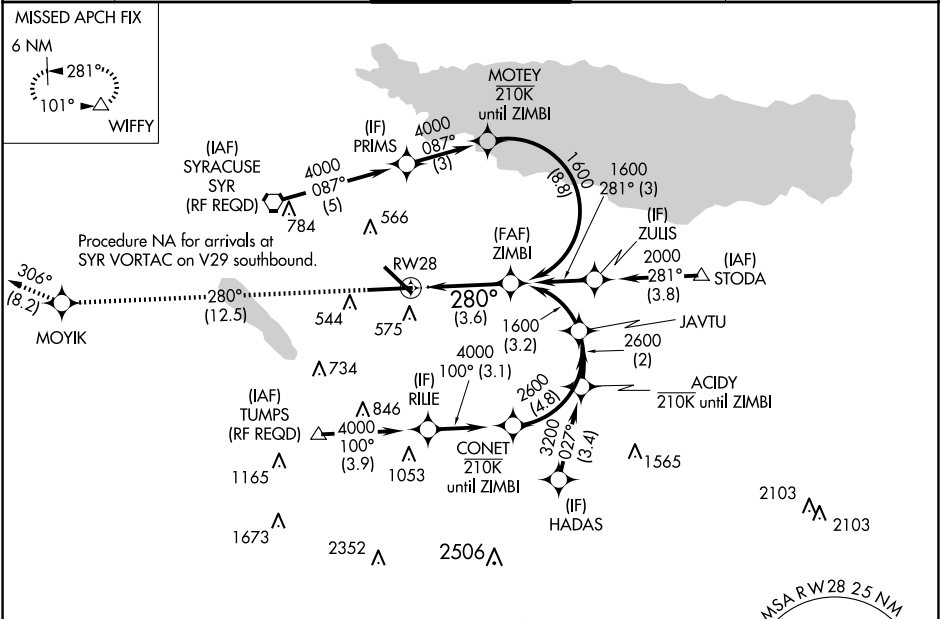
APP CRS	Rwy Idg	9013
280°	TDZE	413
	Apt Elev	421

# RNAV (RNP) Y RWY 28

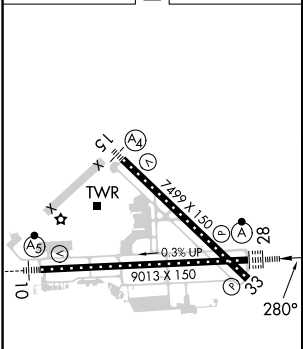
SYRACUSE HANCOCK INTL (SYR)

RNP AR APCH.	ALSF-2	MISSED APPROACH: Climb to 3000 on track 280° to MOYIK and on track 306° to WIFFY and hold.
▼ For uncompensated Baro-VNAV systems, procedure NA below -18°C or above 54°C. For inop ALS, increase RNP 0.15 all Cats visibility to 1½. For inop ALS, increase RNP 0.30 all Cats visibility to 1%.		

ATIS	SYRACUSE APP CON	SYRACUSE TOWER	GND CON	CLNC DEL
124.225	126.125 269.125	120.3 239.0	121.7 348.6	125.05 257.775



ELEV 421	D	TDZE 413
----------	---	----------



TDZ/CL Rwy 28
HIRL Rwy 10-28 and 15-33



3000	MOYIK	tr 280°	WIFFY	See planview for multiple IF locations.	ZIMBI
					1600
					1600
					GP 3.00°
					TCH 78
					3.6 NM
CATEGORY	A	B	C	D	
RNP 0.15 DA		862/55	449 (500-1)		
RNP 0.30 DA		957-1½	544 (600-1%)		

AUTHORIZATION REQUIRED

NE-2, 10 JUL 2025 to 07 AUG 2025

NE-2, 10 JUL 2025 to 07 AUG 2025