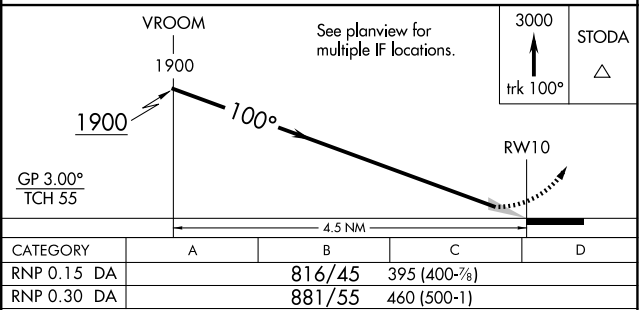
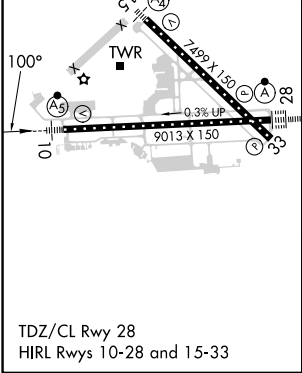
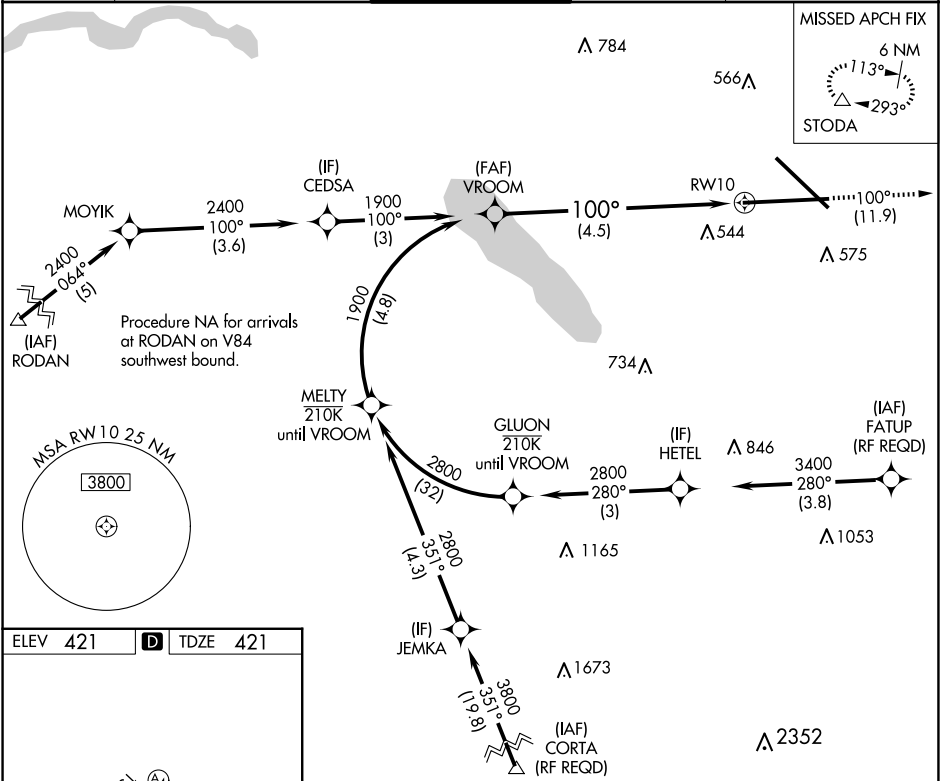


APP CRS	Rwy Idg	9013
100°	TDZE	421
	Apt Elev	421

RNAV (RNP) Y RWY 10
SYRACUSE HANCOCK INTL (SYR)

RNP AR APCH.	MALSR	MISSED APPROACH:
For uncompensated Baro-VNAV systems, procedure NA below -18°C or above 54°C. For inop ALS, increase RNP 0.15 all Cats visibility to 1½. For inop ALS, increase RNP 0.30 all Cats visibility to 1¾.		Climb to 3000 on track 100° to STODA and hold.

ATIS	SYRACUSE APP CON	SYRACUSE TOWER	GND CON	CLNC DEL
124,225	126.125 269.125	120.3 239.0	121.7 348.6	125.05 257.775



AUTHORIZATION REQUIRED

NE-2, 10 JUL 2025 to 07 AUG 2025

NE-2, 10 JUL 2025 to 07 AUG 2025