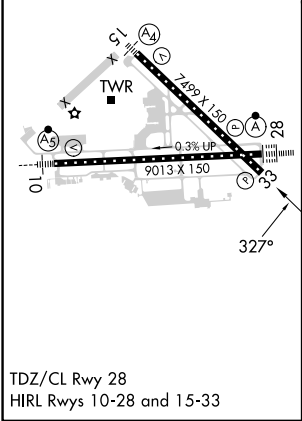
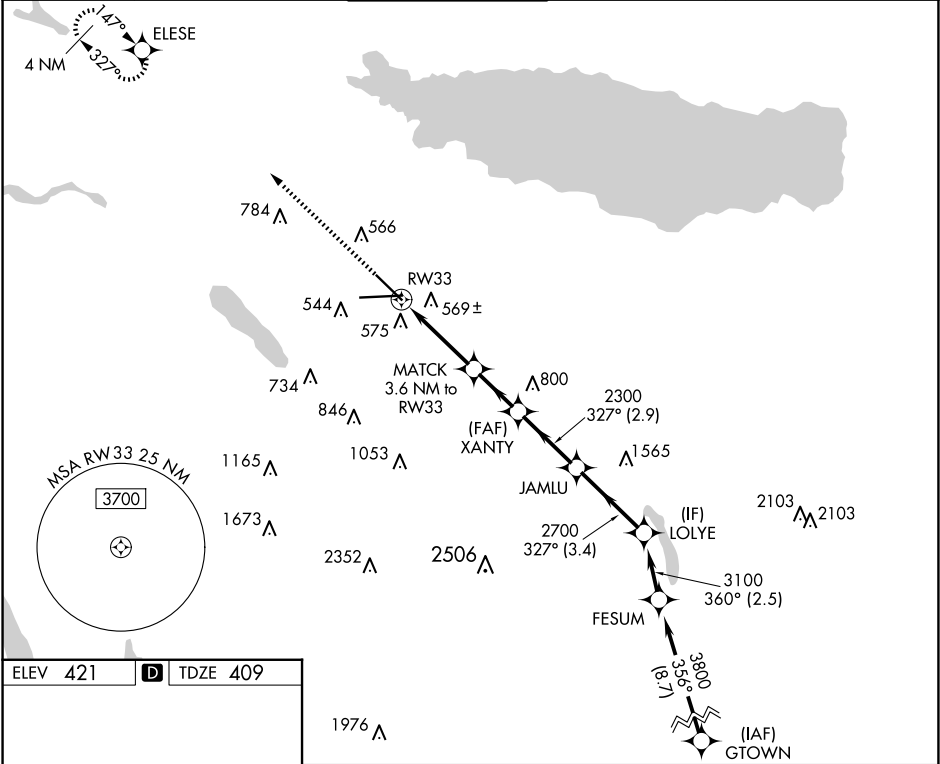


WAAS CH <b>81823</b> <b>W33A</b>	APP CRS <b>327°</b>	Rwy Idg TDZE Apt Elev	<b>7499</b> <b>409</b> <b>421</b>
--	------------------------	-----------------------------	---

RNAV (GPS) RWY 33

SYRACUSE HANCOCK INTL (SYR)

RNP APCH.				MISSED APPROACH: Climb to 3000 direct ELESE and hold.					
▼ Rwy 33 helicopter visibility reduction below ¾ SM NA. For uncompensated									
▲ Baro-VNAV systems, LNAV/VNAV NA below -20°C or above 54°C.									
ATIS 124.225		SYRACUSE APP CON 126.125 269.125		SYRACUSE TOWER 120.3 239.0		GND CON 121.7 348.6		CLNC DEL 125.05 257.775	



3000 ↑		ELESE ✦		MATCH 3.6 NM to RW33		XANTY 2300		JAMLU		LOLYE 3100	
*LNAV only		*1.1 NM to RW33		1580*		2300		2700		GP 3.00° TCH 50	
RW33		1.1 NM		2.5 NM		2.2 NM		2.9 NM		3.4 NM	
CATEGORY		A		B		C		D			
LPV DA				715/45		306 (300-7½)					
LNAV/ VNAV DA				882-1⅓		473 (500-1⅓)					
LNAV MDA		820/55		411 (400-1)		820/60		411 (400-1¼)			
CIRCLING		900-1 479 (500-1)		920-1 499 (500-1)		1020-1½ 599 (600-1½)		1180-2½ 759 (800-2½)			

NE-2, 10 JUL 2025 to 07 AUG 2025

NE-2, 10 JUL 2025 to 07 AUG 2025