

SYRACUSE, NEW YORK

AL-411 (FAA)

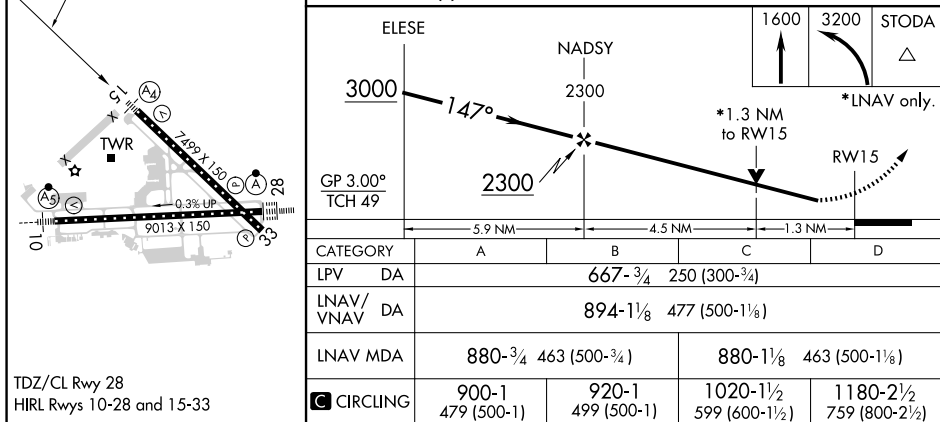
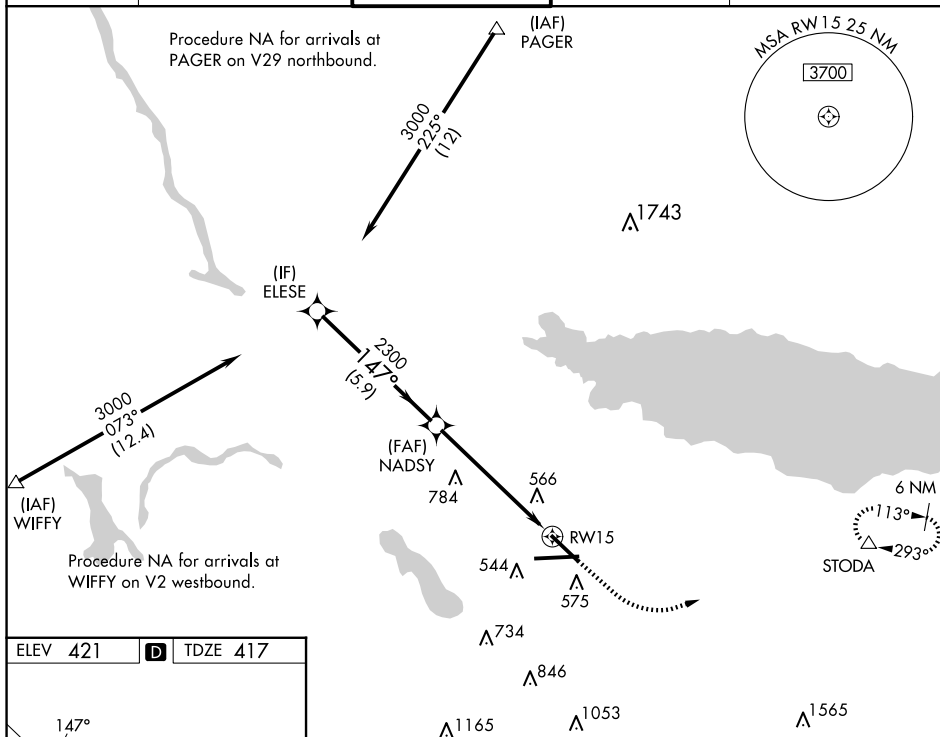
25107

WAAS CH 50117 W15A	APP CRS 147°	Rwy Idg 7499 TDZE 417 Apt Elev 421
--	------------------------	---

RNAV (GPS) RWY 15
SYRACUSE HANCOCK INTL (SYR)

RNP APCH.	<div> <div>T</div> <div>A</div> </div> <p>Rwy 15 helicopter visibility reduction below $\frac{3}{4}$ SM NA.</p> <p>Inop table does not apply to LPV DA all Cats. For uncompensated Baro-VNAV systems, LNAV/VNAV NA below -19°C or above 54°C.</p>	<div> <div>MALS</div> <div> <div>A4</div> <div>—</div> </div> </div>	<p>MISSED APPROACH: Climb to 1600 then climbing left turn to 3200 direct STODA and hold, continue climb-in-hold to 3200.</p>
-----------	--	--	--

ATIS 124.225	SYRACUSE APP CON 126.125 269.125	SYRACUSE TOWER 120.3 239.0	GND CON 121.7 348.6	CLNC DEL 125.05 257.775
-----------------	-------------------------------------	-------------------------------	------------------------	----------------------------



SYRACUSE, NEW YORK

Amdt 2 30JAN20

SYRACUSE HANCOCK INTL (SYR)

RNAV (GPS) RWY 15

43°07'N-76°06'W

NE-2, 10 JUL 2025 to 07 AUG 2025

NE-2, 10 JUL 2025 to 07 AUG 2025