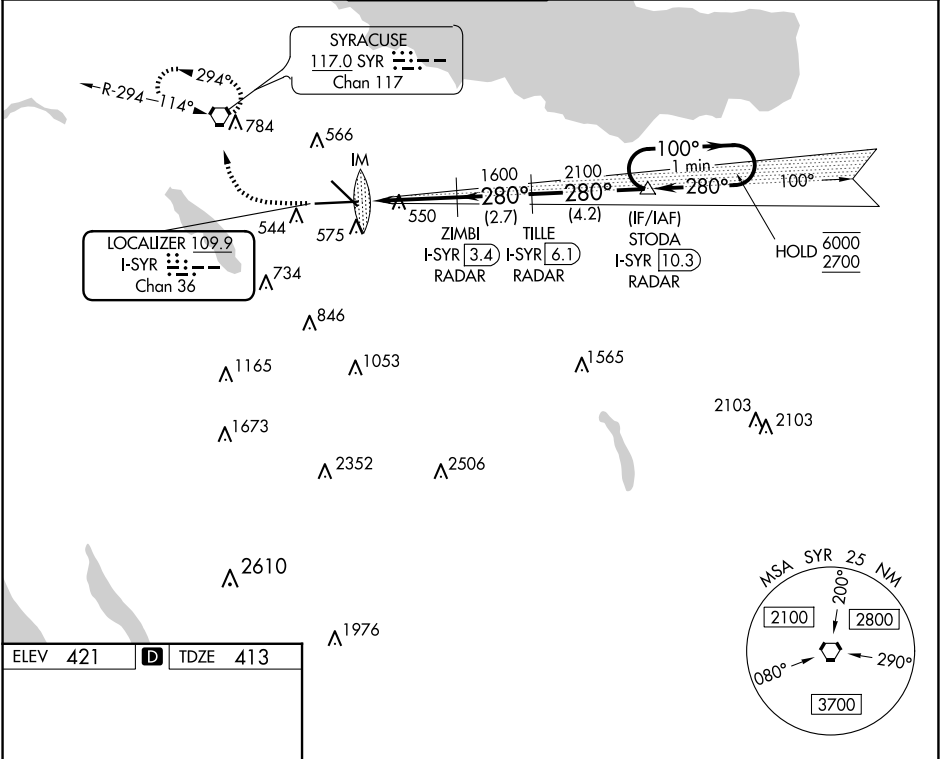


LOC/DME I-SYR <b>109.9</b> Chan <b>36</b>	APP CRS <b>280°</b>	Rwy Idg TDZE Apt Elev	<b>9013</b> <b>413</b> <b>421</b>
---	------------------------	-----------------------------	---

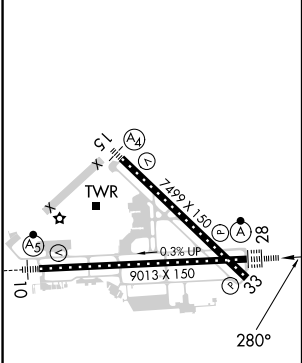
ILS or LOC RWY 28  
SYRACUSE HANCOCK INTL (SYR)

DME or RADAR required.		ALS-F-2	MISSED APPROACH: Climb to 1100 then climbing right turn to 3000 direct SYR VORTAC and hold, continue climb-in-hold to 3000.

ATIS <b>124.225</b>	SYRACUSE APP CON <b>126.125 269.125</b>	SYRACUSE TOWER <b>120.3 239.0</b>	GND CON <b>121.7 348.6</b>	CLNC DEL <b>125.05 257.775</b>
------------------------	--	--------------------------------------	-------------------------------	-----------------------------------



ELEV 421	D	TDZE 413
----------	---	----------



1100	3000	SYR	*LOC only	STODA I-SYR 10.3 RADAR	One Minute Holding Pattern
				ZIMBI I-SYR 3.4 RADAR	
				TILLE I-SYR 6.1 RADAR	
				I-SYR 0.2	
				*I-SYR 0.9	
				IM	
				1600	
				2100	
				280°	
				100°	
				6000	
				2700	
				GS 3.00°	
				TCH 78	
				0.2	
				0.9	
				2.5 NM	
				2.7 NM	
				4.2 NM	
CATEGORY	A	B	C	D	
S-ILS 28	613/18 200 (200-½)				
S-LOC 28	800/24 387 (400-½) 800/35 387 (400-¾)				
CIRCLING	900-1 479 (500-1)	920-1 499 (500-1)	1020-1½ 599 (600-1½)	1180-2½ 759 (800-2½)	