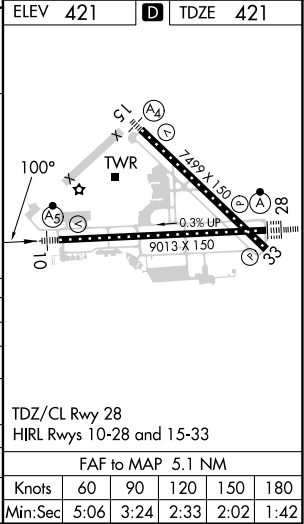
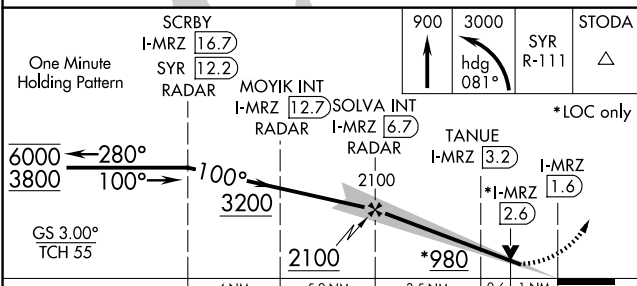
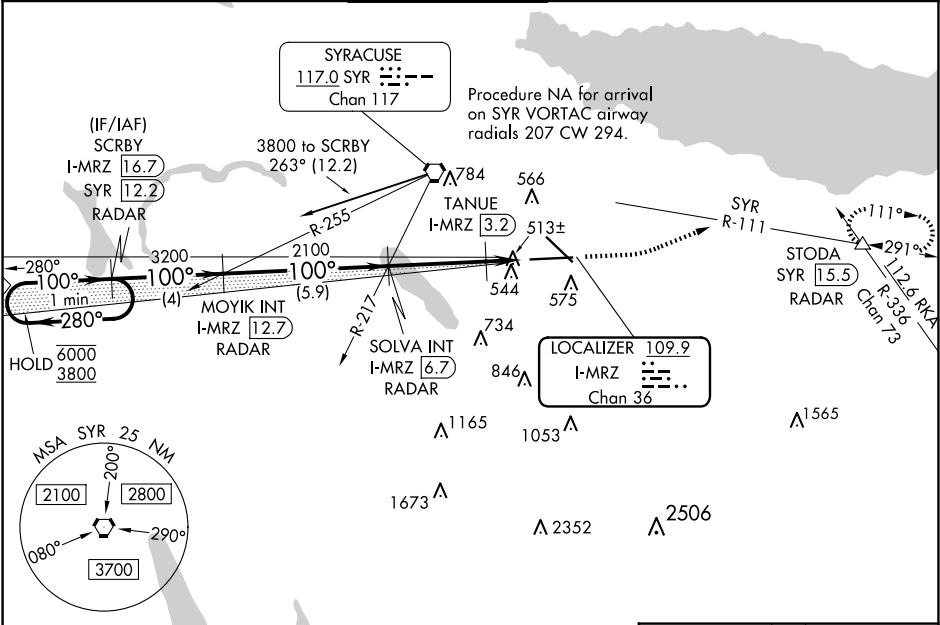


LOC/DME I-MRZ	APP CRS	Rwy Idg	9013
109.9	100°	TDZE	421
Chan 36		Apt Elev	421

ILS or LOC RWY 10
SYRACUSE HANCOCK INTL (SYR)

DME or RADAR required.	MALSR	MISSED APPROACH: Climb to 900 then climbing left turn to 3000 on heading 081° and on SYR VORTAC R-111 to STODA INT/ SYR VORTAC 15.5 DME/RADAR and hold.
TANUE fix minimums, for inoperative ALS, increase S-LOC 10 Cats C and D visibility to RVR 5500. **RVR 1800 authorized with use of FD or AP or HUD to DA.		

ATIS 124.225	SYRACUSE APP CON 126.125 269.125	SYRACUSE TOWER 120.3 239.0	GND CON 121.7 348.6	CLNC DEL 125.05 257.775
-----------------	-------------------------------------	-------------------------------	------------------------	----------------------------



CATEGORY	A	B	C	D
S-ILS 10 **	621/24	200 (200-1/2)		
S-LOC 10	980/24	559 (600-1/2)	980/60	559 (600-1 1/4)
CIRCLING	980-1	559 (600-1)	1020-1 5/8 599 (600-1 1/2)	1180-2 1/2 759 (800-2 1/2)
TANUE FIX MINIMUMS (DME REQUIRED)				
S-LOC 10	780/24	359 (400-1/2)	780/30	359 (400-3/4)
CIRCLING	900-1 479 (500-1)	920-1 499 (500-1)	1020-1 1/2 599 (600-1 1/2)	1180-2 1/2 759 (800-2 1/2)

NE-2, 10 JUL 2025 to 07 AUG 2025

NE-2, 10 JUL 2025 to 07 AUG 2025