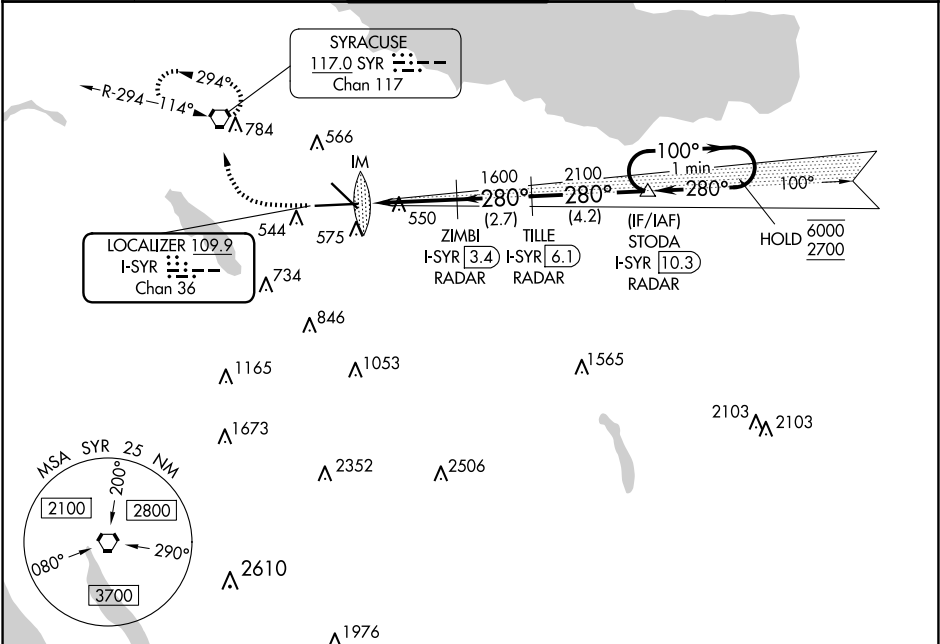


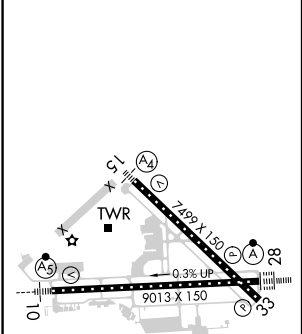
LOC/DME I-SYR 109.9 Chan 36	APP CRS 280°	Rwy Idg TDZE 413 Apt Elev 421
---	------------------------	---

ILS RWY 28 (SA CAT I)
SYRACUSE HANCOCK INTL (SYR)

DME or RADAR required.		ALSIF-2	MISSED APPROACH: Climb to 1100 then climbing right turn to 3000 direct SYR VORTAC and hold, continue climb-in-hold to 3000.	
Requires specific OPSPEC, MSPEC, or LOA approval and use of HUD to DH.				
ATIS 124.225	SYRACUSE APP CON 126.125 269.125	SYRACUSE TOWER 120.3 239.0	GND CON 121.7 348.6	CLNC DEL 125.05 257.775



ELEV 421	D	TDZE 413
-----------------	----------	-----------------



1100	3000	SYR	STODA I-SYR 10.3 RADAR One Minute Holding Pattern	
			ZIMBI I-SYR 3.4 RADAR	TILLE I-SYR 6.1 RADAR
IM 1600 280° 2100 280° 100° 6000 2700		GS 3.00° TCH 78		
975'		3.6 NM	2.7 NM	4.2 NM
CATEGORY	A	B	C	D
S-ILS 28	RA 150/14 150 DA 563			

SA CATEGORY I ILS - SPECIAL AIRCREW
& AIRCRAFT CERTIFICATION REQUIRED