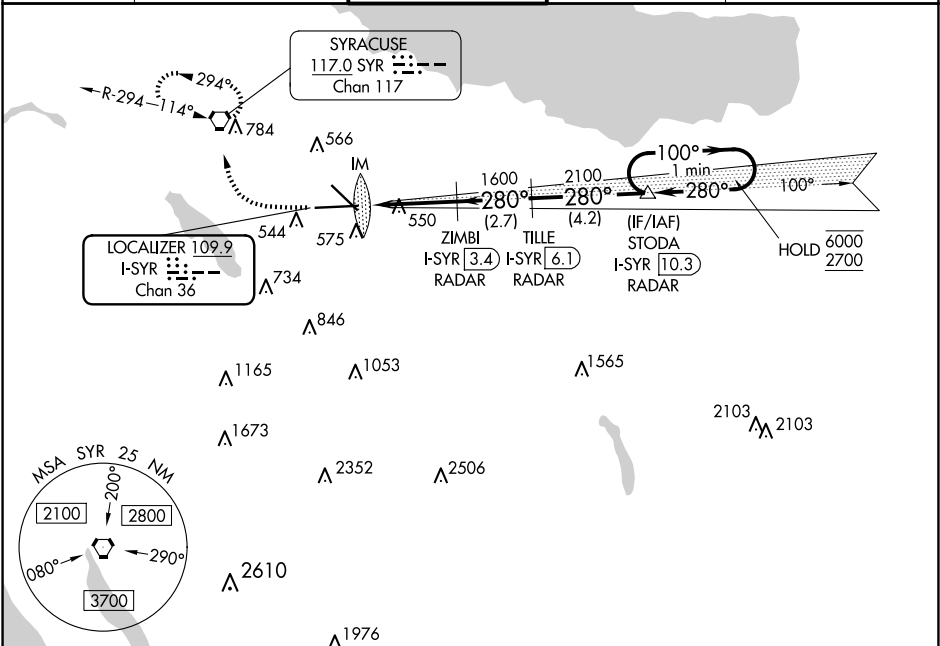


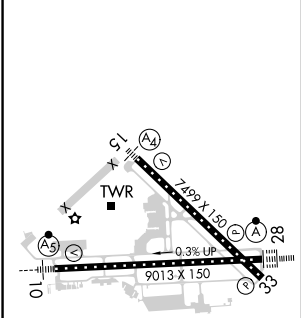
LOC/DME I-SYR 109.9 Chan 36	APP CRS 280°	Rwy Idg 9013 TDZE 413 Apt Elev 421
---	------------------------	---


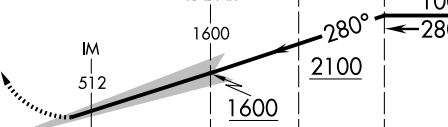
ILS RWY 28 (CAT II)
SYRACUSE HANCOCK INTL (SYR)

DME or RADAR required.		ALSF-2	MISSED APPROACH: Climb to 1100 then climbing right turn to 3000 direct SYR VORTAC and hold, continue climb-in-hold to 3000.	
▼ RVR 1000 authorized with specific OPSEC, MSPEC, or LOA approval and use of autoland or HUD to touchdown.		ⓘ		
ATIS 124.225	SYRACUSE APP CON 126.125 269.125	SYRACUSE TOWER 120.3 239.0	GND CON 121.7 348.6	CLNC DEL 125.05 257.775



ELEV 421	D	TDZE 413
-----------------	----------	-----------------



1100 ↑	3000 ↷	SYR 	<div><div><div>ZIMBI I-SYR 3.4 RADAR</div><div>TILLE I-SYR 6.1 RADAR</div><div>STODA I-SYR 10.3 RADAR</div></div><div>One Minute Holding Pattern</div></div>			
						
CATEGORY			A	B	C	D
S-ILS 28			RA 100/12 100 DA 513			

CATEGORY II ILS - SPECIAL AIRCREW
& AIRCRAFT CERTIFICATION REQUIRED