

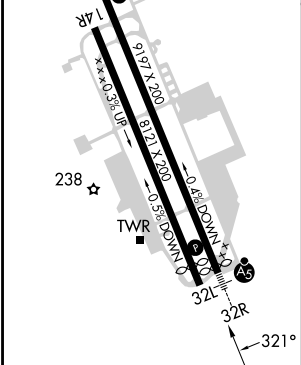
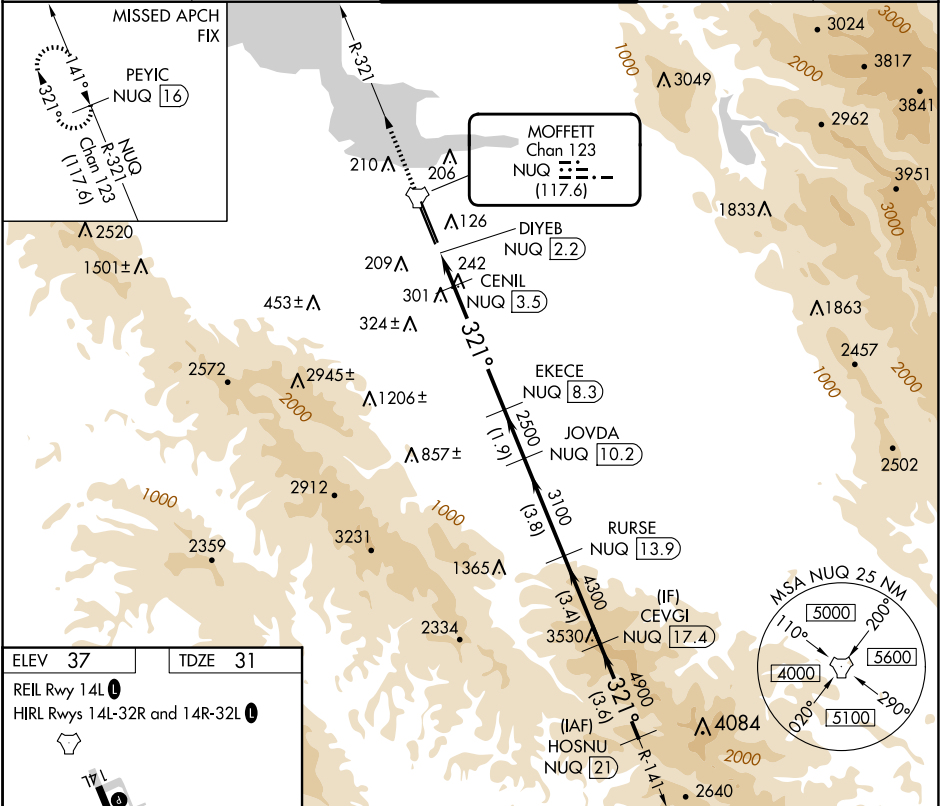
TACAN NUQ	APP CRS	Rwy Idg	9006
Chan 123	321°	TDZE	31
(117.6)		Apt Elev	37

TACAN RWY 32R

MOFFETT FEDERAL AIRFIELD (NUQ)

RADAR required for procedure entry.		MALSR	MISSED APPROACH: Climb to 3200 on NUQ TACAN R-321 to PEYIC/16 DME and hold.
For inop ALS, increase Cat E visibility to 1 1/2 SM.		AS	

ATIS	NORCAL APP CON	MOFFETT TOWER ★	GND CON	CLNC DEL
124.175 283.0	120.1 290.25	119.55 (CTAF) 259.65	121.85 278.95	296.75



3200 ↑ NUQ R-321		PEYIC NUQ 16		VGS1 and descent angles not coincident (VGS1 Angle 3.00/TCH 55).			RURSE NUQ 13.9		CEVGI NUQ 17.4		HOSNU NUQ 21		
DIYEB NUQ 2.2		CENIL NUQ 3.5		EKECE NUQ 8.3		JOVDA NUQ 10.2		4300		321°		5500	
720		≤ 3.48° TCH 55		2500		3100		4900					
0.5		1.3 NM		4.8 NM		1.9 NM		3.8 NM		3.4 NM		3.6 NM	
CATEGORY		A		B		C		D		E			
S-32R		560-½		529 (600-½)		560-1		529 (600-1)					
CIRCLING		560-1 523 (600-1)		600-1 563 (600-1)		620-½ 583 (600-½)		780-2½ 743 (800-2½)		940-3 903 (1000-3)			