

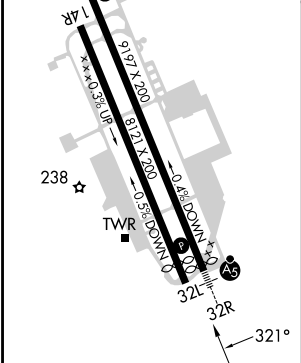
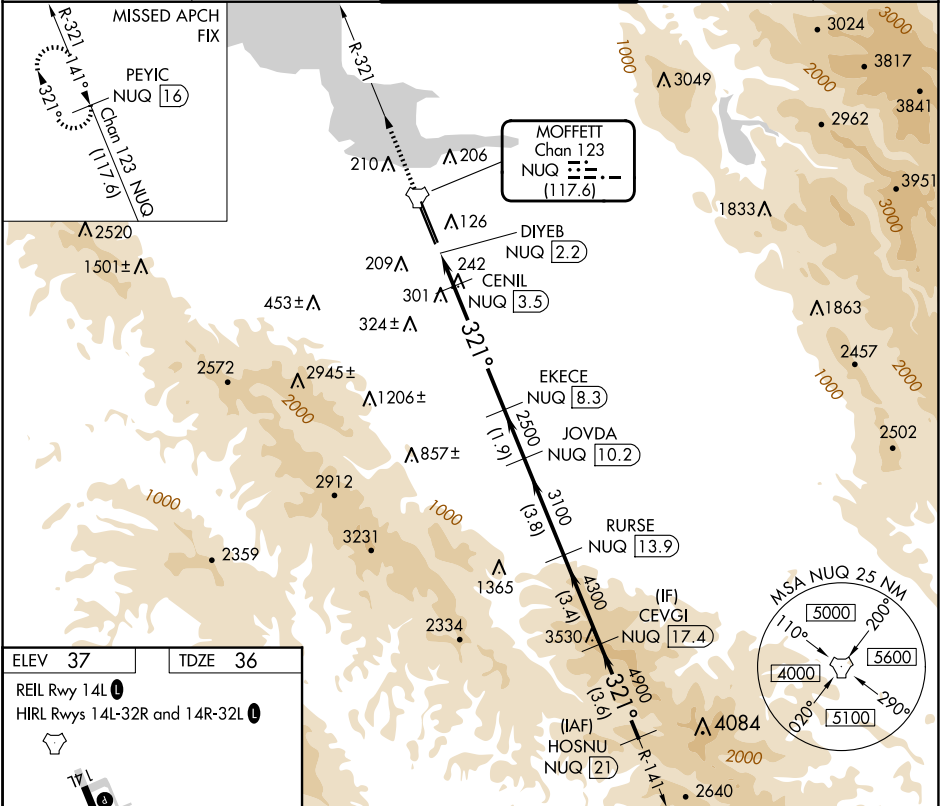
TACAN NUQ	APP CRS	Rwy Idg	7521
Chan 123	321°	TDZE	36
(117.6)		Apt Elev	37

TACAN RWY 32L

MOFFETT FEDERAL AIRFIELD (NUQ)

RADAR required for procedure entry.		MISSED APPROACH: Climb to 3200 on NUQ TACAN R-321 to PEYIC/16 DME and hold.
	Rwy 32L helicopter visibility reduction below ¾ SM NA.	

ATIS	NORCAL APP CON	MOFFETT TOWER ★	GND CON	CLNC DEL
124.175 283.0	120.1 290.25	119.55 (CTAF) 259.65	121.85 278.95	296.75



	3200	PEYIC							
	NUQ R-321	NUQ 16							
		DIYEB	CENIL	EKECE	JOVDA	RURSE	CEVGI	HOSNU	
		NUQ 2.2	NUQ 3.5	NUQ 8.3	NUQ 10.2	NUQ 13.9	NUQ 17.4	NUQ 21	
				3.45°					
				TCH 55					
				720	2500	3100	4300	4900	5500
				0.5	0.8	0.5	4.8 NM	1.9 NM	3.8 NM
							3.4 NM	3.6 NM	
CATEGORY		A	B	C	D	E			
S-32L		560-1	524 (600-1)	560-1½	524 (600-1½)				
CIRCLING		560-1	600-1	620-1½	780-2½	940-3			
		523 (600-1)	563 (600-1)	583 (600-1½)	743 (800-2½)	903 (1000-3)			