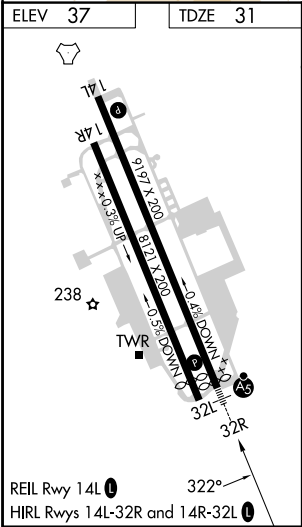
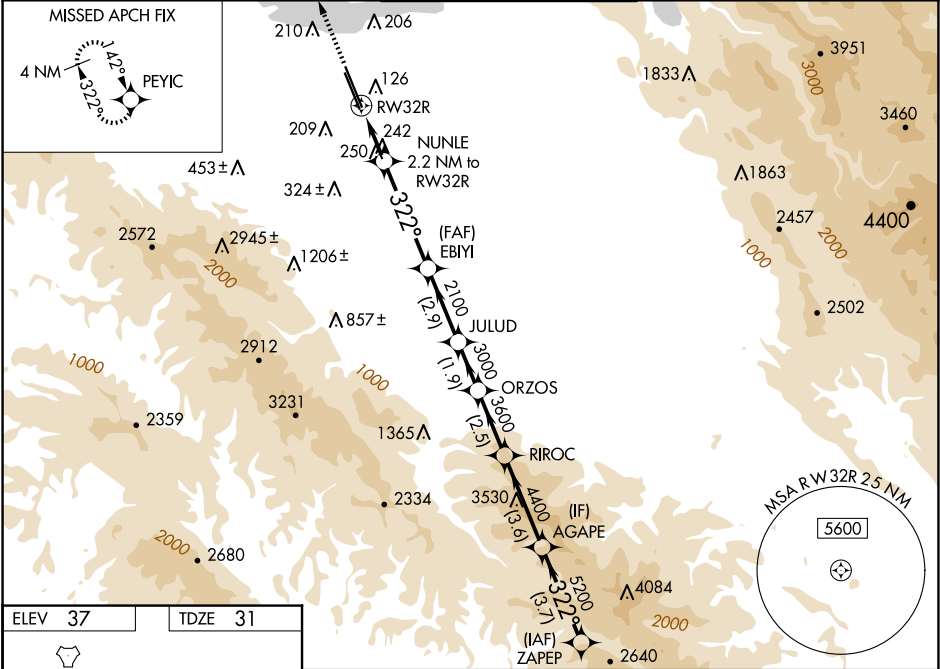


WAAS CH 53343 W32B	APP CRS 322°	Rwy Idg TDZE Apt Elev	9006 31 37
--	------------------------	-----------------------------	---------------------------------------

RNAV (GPS) RWY 32R
MOFFETT FEDERAL AIRFIELD (NTUQ)

RNP APCH - GPS.		MALSR	MISSED APPROACH: Climb to 3200 direct PEYIC and hold.
▼ For uncompensated Baro-VNAV systems, LNAV/VNAV NA below -15°C or above 54°C. Rwy 32R helicopter visibility reduction below ¾ SM NA. For inop ALS increase LPV all Cats visibility to 1¼ SM, LNAV/VNAV all Cats visibility to 1¾ SM and LNAV Cats A/B to 1 SM and Cats C/D visibility to 1¾ SM.		AS	

ATIS 124.175 283.0	NORCAL APP CON 120.1 290.25	MOFFETT TOWER★ 119.55 0 (CTAF) 259.65	GND CON 121.85 278.95	CLNC DEL 296.75
------------------------------	---------------------------------------	---	---------------------------------	---------------------------



3200	PEYIC								
		NUNLE 2.2 NM to RW32R	EBIYI 2100	JULUD	ORZOS	RIROC	AGAPE	ZAPEP	5500
		1.3 NM to RW32R							
		1.3	0.9	4.1 NM	2.9 NM	1.9 NM	2.5 NM	3.6 NM	3.7 NM
CATEGORY		A		B		C		D	
LPV DA		452-¾ 421 (500-¾)							
LNAV/ VNAV DA		493-1 462 (500-1)							
LNAV MDA		500-¾ 469 (500-¾)				500-1 469 (500-1)			
CIRCLING		540-1 503 (600-1)	600-1 563 (600-1)	620-1½ 583 (600-1½)	780-2½ 743 (800-2½)				