

MOUNTAIN VIEW, CALIFORNIA

AL-410 (FAA)

25051

WAAS CH 70442 W14A	APP CRS 142°	Rwy Idg 9197 TDZE 6 Apt Elev 37
--	------------------------	--

RNAV (GPS) RWY 14L

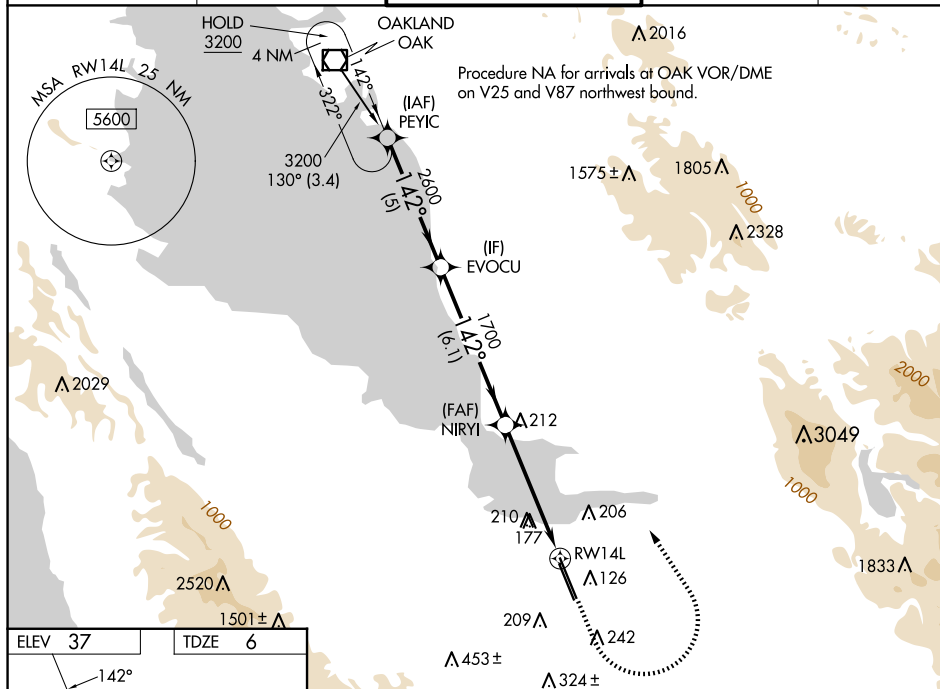
MOFFETT FEDERAL AIRFIELD (NUQ)

RNP APCH.

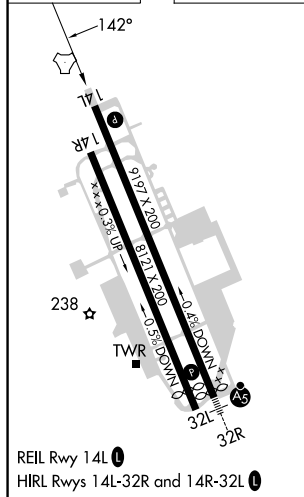
T For uncompensated Baro-VNAV systems, LNAV/VNAV
A NA below 0°C or above 54°C.

MISSED APPROACH: Climb to 500 then climbing left turn to 3200 direct PEYIC and hold.

ATIS 124.175 283.0	NORCAL APP CON 120.1 290.25	MOFFETT TOWER ★ 119.55 (CTAF) 259.65	GND CON 121.85 278.95	CLNC DEL 296.75
-----------------------	--------------------------------	---	--------------------------	--------------------



ELEV 37	TDZE 6
---------	--------



MOUNTAIN VIEW, CALIFORNIA

Amdt 1 20JUN19

37°25'N-122°03'W

MOFFETT FEDERAL AIRFIELD (NUQ)

RNAV (GPS) RWY 14L

SW-2, 10 JUL 2025 to 07 AUG 2025

SW-2, 10 JUL 2025 to 07 AUG 2025