

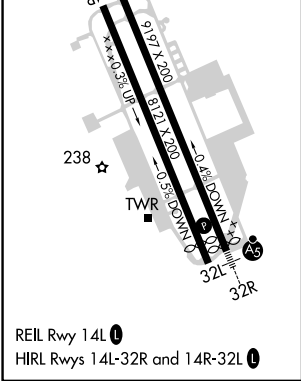
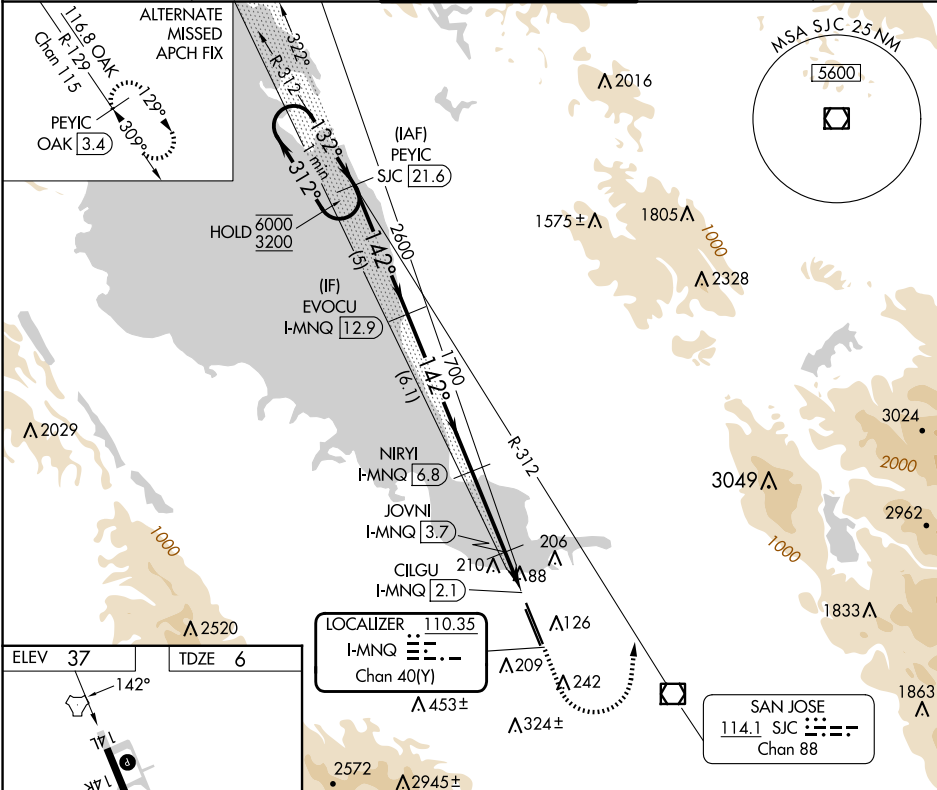
LOC/DME I-MNQ <b>110.35</b> Chan <b>40</b> (Y)	APP CRS <b>142°</b>	Rwy ldg TDZE <b>6</b> Apt Elev <b>37</b>
--	------------------------	--

LOC RWY 14L

MOFFETT FEDERAL AIRFIELD (NUQ)

DME required. RADAR required for procedure entry.	MISSED APPROACH: Climb to 500 then climbing left turn to 3200 on heading 350° and SJC VOR/DME R-312 to PEYIC/SJC 21.6 DME and hold.
---	---

ATIS <b>124.175 283.0</b>	NORCAL APP CON <b>120.1 290.25</b>	MOFFETT TOWER ★ <b>119.55</b> (CTAF) <b>259.65</b>	GND CON <b>121.85 278.95</b>	CLNC DEL <b>296.75</b>
------------------------------	---------------------------------------	---	---------------------------------	---------------------------



One Minute Holding Pattern	PEYIC SJC 21.6	EVOCU I-MNQ 12.9	NIRYI I-MNQ 6.8	JOVNI I-MNQ 3.7	CILGU I-MNQ 2.1	500	3200	SJC R-312	PEYIC SJC 21.6
6000	3200	312°	132°	142°	2600	1700	700	300°	TCH 53
5 NM 6.1 NM 3.1 NM 1.1 0.5 0.4									
CATEGORY	A B C D								
S-LOC 14L	360-1 354 (400-1)								
CIRCLING	540-1 503 (600-1)	600-1 563 (600-1)	620-1½ 583 (600-1½)	780-2½ 743 (800-2½)					