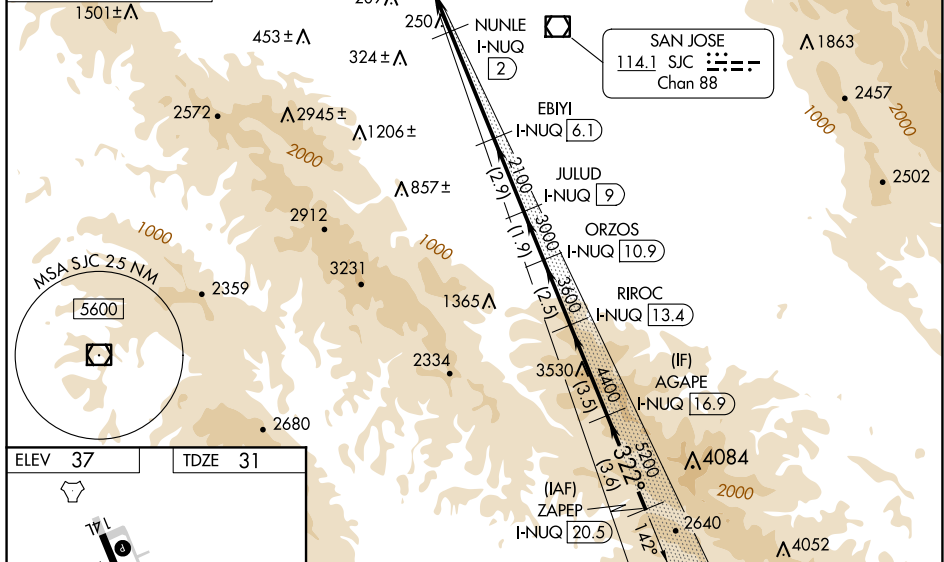


ILS or LOC RWY 32R  
MOFFETT FEDERAL AIRFIELD (NUQ)

**MISSED APPROACH:** Climb to 700 then climbing left turn to 4000 on heading 310° and on OAK VOR/DME R-139 to OAK VOR/DME and hold.



REIL Rwy 14L

HIRL Rws 14L-32R and 14R-32L

322°