

SUMTER, SOUTH CAROLINA

TACAN Y RWY 4L

TACAN SSC		APCH CRS	Rwy Idg	4L 10,014	4R 8014
Chan 38		043°	TDZE	240	236
			Arpt Elev	241	241

[USAF]

SHAW AFB (KSSC)

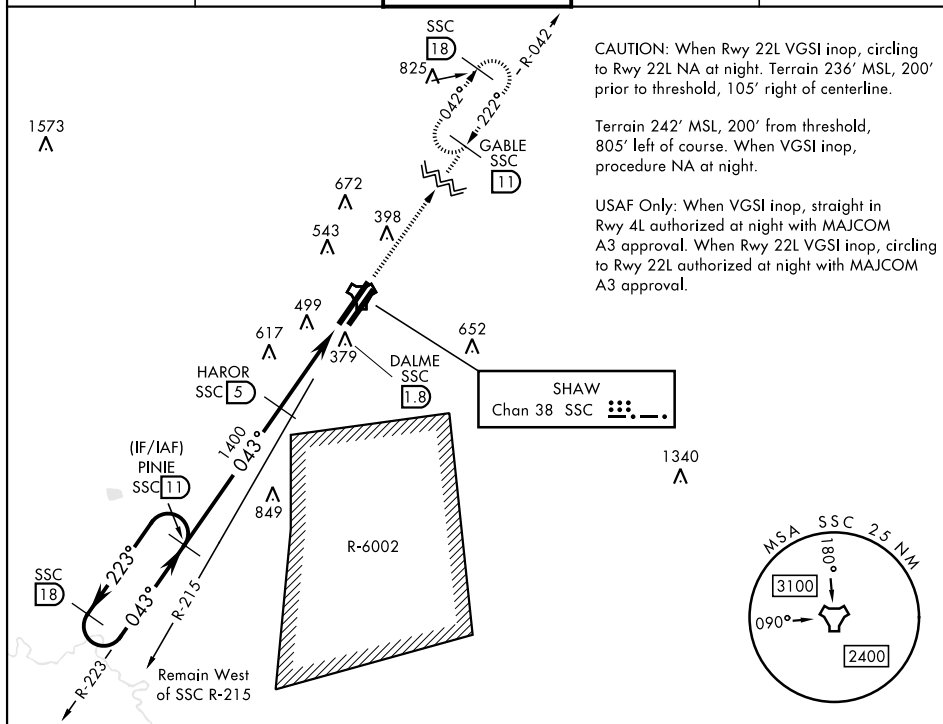
RADAR required when R-6002 active.

T * When ALS inop, increase CAT AB RVR to 55 and vis to 1 mile, CAT CDE vis to 1 $\frac{5}{8}$ miles.

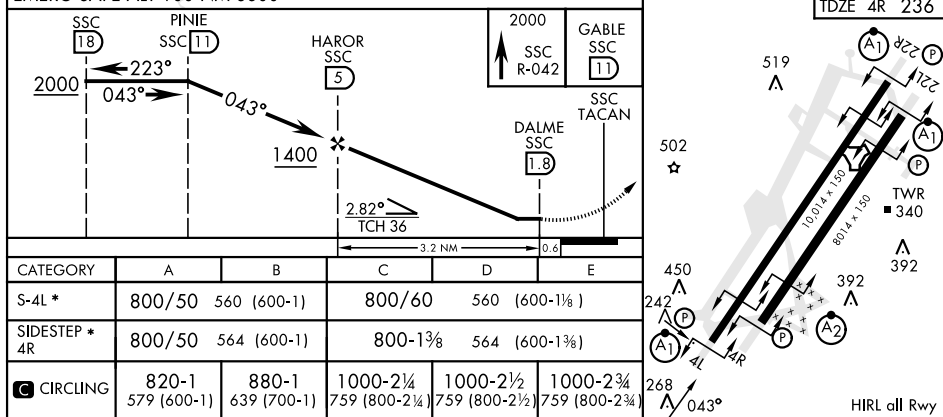
ALSF-1

MISSED APPROACH: Climbing to 2000, intercept SSC TACAN R-042 to GABLE and hold.

ATIS ★ 132.125 270.1	SHAW APP CON 125.4 318.1	SHAW TOWER ★ 126.65 254.25	GND CON 121.8 289.4	CLNC DEL 121.8 289.4
-------------------------	-----------------------------	-------------------------------	------------------------	-------------------------



EMERG SAFE ALT 100 NM 3800



SUMTER, SOUTH CAROLINA
Amdt 1 07NOV19

33° 58' N-80° 28' W

SHAW AFB (KSSC)

TACAN Y RWY 4L

SE-2, 10 JUL 2025 to 07 AUG 2025

SE-2, 10 JUL 2025 to 07 AUG 2025