

TACAN Y RWY 22R

TACAN SSC	APCH CRS	22R	22L
Chan 38	222°	Rwy ldg 10,014	8014
		TDZE 240	235
		Arpt Elev 241	241

[USAF]

SHAW AFB (KSSC)

RADAR required when R-6002 active.		ALSIF-1	MISSED APPROACH: Climbing to 2000, intercept SSC TACAN R-223 to PINIE and hold.	
* When ALS inop, increase CAT AB RVR to 55, vis to 1 mile; CAT CDE vis to 1 1/2 miles.		A1		
ATIS ★	SHAW APP CON	SHAW TOWER ★	GND CON	CLNC DEL
132.125 270.1	125.4 318.1	126.65 254.25	121.8 289.4	121.8 289.4

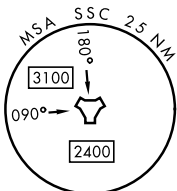
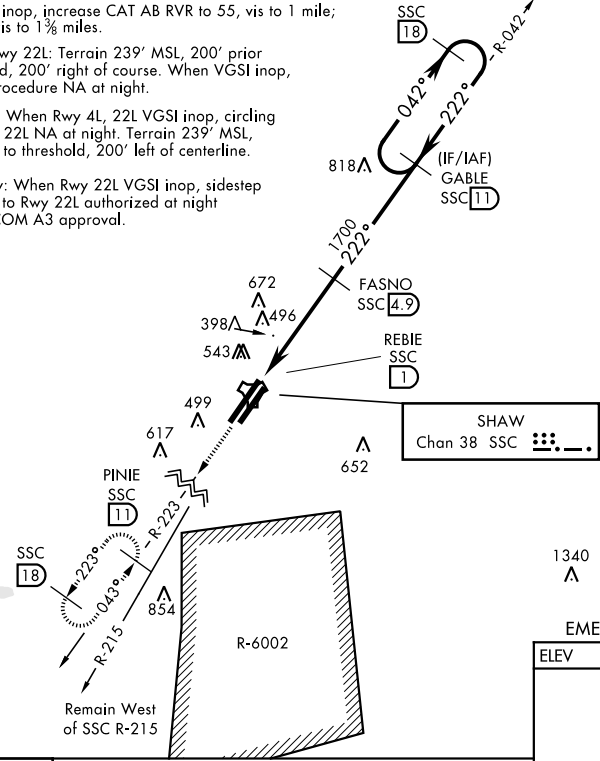
\*\* When ALS inop, increase CAT AB RVR to 55, vis to 1 mile; CAT CDE vis to 1 3/8 miles.

Sidestep Rwy 22L: Terrain 239' MSL, 200' prior to threshold, 200' right of course. When VGSI inop, sidestep procedure NA at night.

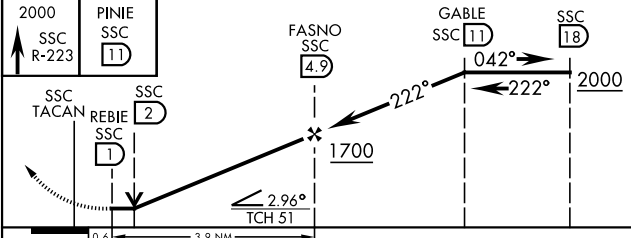
CAUTION: When Rwy 4L, 22L VGSI inop, circling to Rwy 4L, 22L NA at night. Terrain 239' MSL, 200' prior to threshold, 200' left of centerline.

USAF Only: When Rwy 22L VGSI inop, sidestep or circling to Rwy 22L authorized at night with MAJCOM A3 approval.

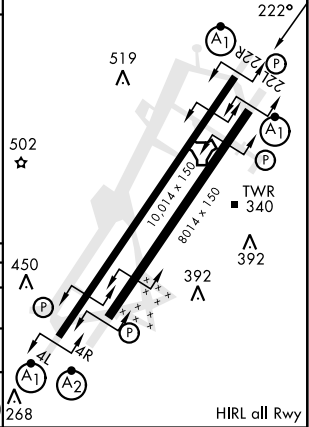
1573



EMERG SAFE ALT 100 NM 3800	
ELEV 241	TDZE 22R 240
	TDZE 22L 235



CATEGORY	A	B	C	D	E
S-22R*	760/24 520 (600-1/2)		760/55 520 (600-1)		
SIDESTEP ** 22L	760/50 505 (600-1)		760/55 505 (600-1)		
CIRCLING	820-1 579 (600-1)	880-1 639 (700-1)	1000-2 759 (800-2 1/4)	1000-2 759 (800-2 1/2)	1000-2 759 (800-2 3/4)



TACAN Y RWY 22R

SE-2, 10 JUL 2025 to 07 AUG 2025

SE-2, 10 JUL 2025 to 07 AUG 2025