

SUMTER, SOUTH CAROLINA

ILS or LOC Y RWY 4L

LOC I-SSC 110.1	APCH CRS 043°	Rwy Idg TDZE Arpt Elev	4L 10,014 240 241	4R 8014 236 241
---------------------------	-------------------------	------------------------------	---	---

[USAF]

SHAW AFB (KSSC)

RADAR or DME required.

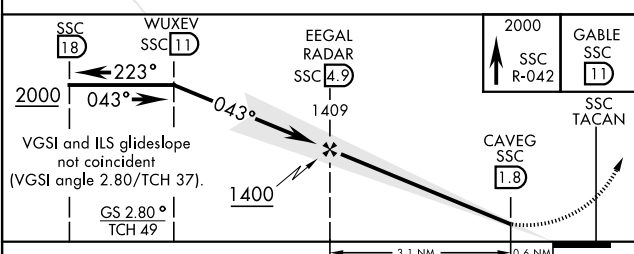
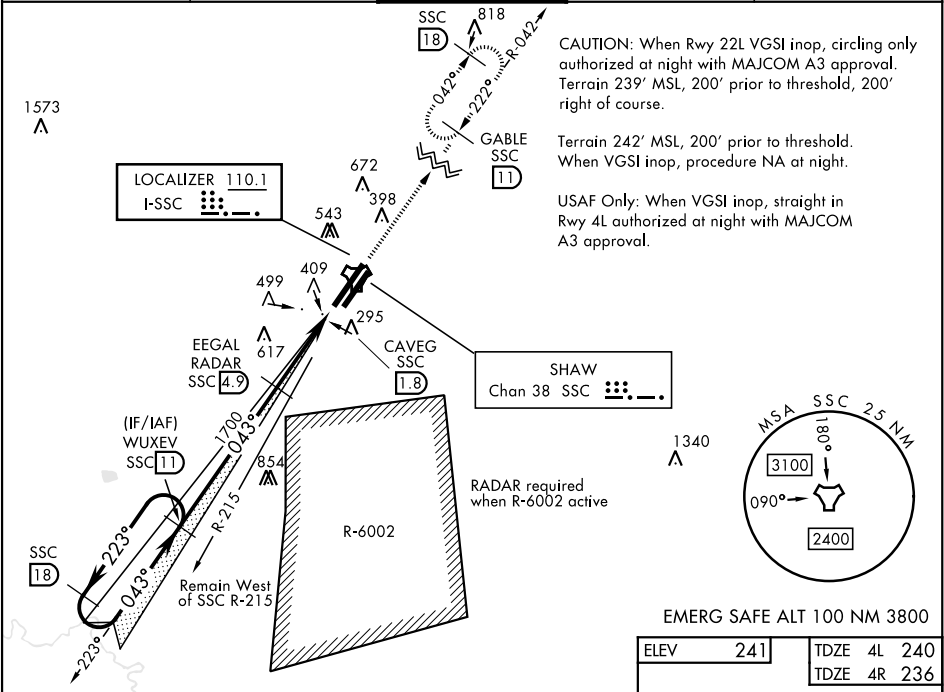
▼ * When ALS inop, increase CAT AB RVR to 55 and vis to 1 mile, CAT CDE vis to 1½ miles.

ALSF-1

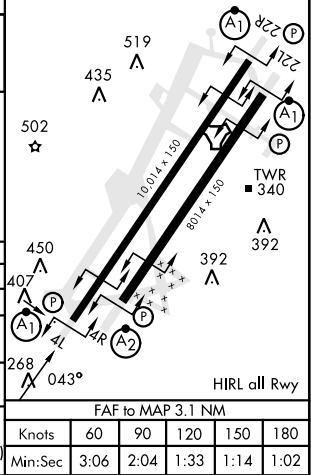
(A1)

MISSED APPROACH: Climbing to 2000, intercept SSC TACAN R-042 to GABLE and hold.

ATIS ★ 132.125 270.1	SHAW APP CON 125.4 318.1	SHAW TOWER ★ 126.65 254.25	GND CON 121.8 289.4	CLNC DEL 121.8 289.4
--------------------------------	------------------------------------	--------------------------------------	-------------------------------	--------------------------------



CATEGORY	A	B	C	D	E
S-ILS 4L	490/50		250	(300-1)	
S-LOC 4L *	780/50	540 (600-1)	780/55	540	(600-1)
SIDESTEP 4R *	780/50	544 (600-¾)	780-1¾	544	(600-1¾)
CIRCLING	820-1	880-1	1000-2¼	1000-2½	1000-2¾
	579 (600-1)	639 (700-1)	759 (800-2¼)	759 (800-2½)	759 (800-2¾)



SUMTER, SOUTH CAROLINA

33° 58'N-80° 28'W

SHAW AFB (KSSC)

Amtd 1 10OCT19

ILS or LOC Y RWY 4L

SE-2, 10 JUL 2025 to 07 AUG 2025

SE-2, 10 JUL 2025 to 07 AUG 2025