

ILS or LOC Y RWY 22R

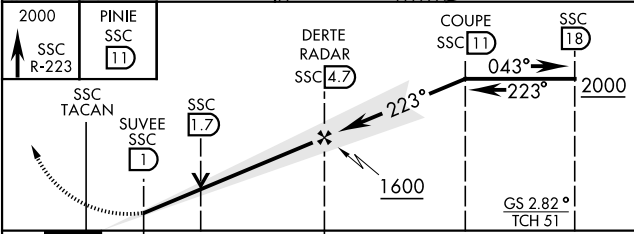
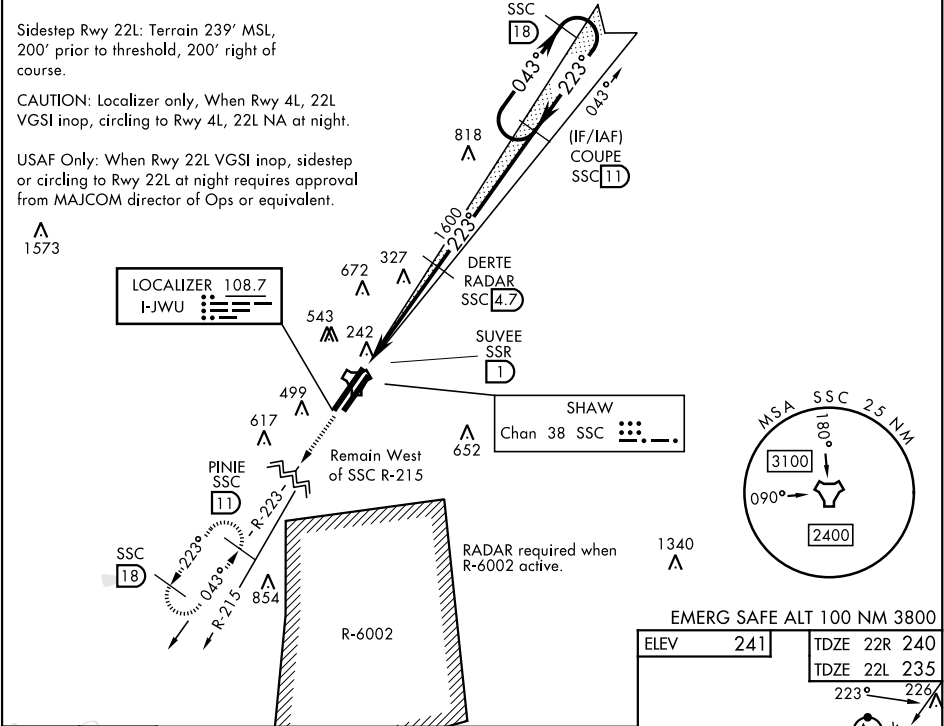
LOC I-JWU	APCH CRS	Rwy Idg	22R	22L
108.7	223°	TDZE	10,014	8014
		Arprt Elev	240	235
			241	241

[USAF]

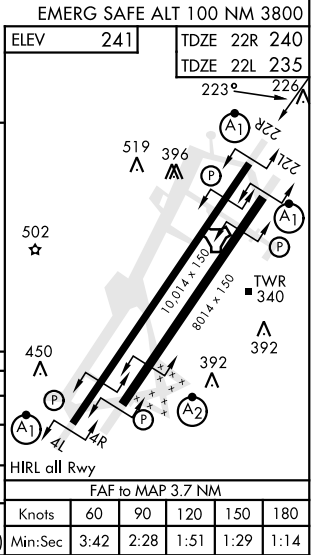
SHAW AFB (KSSC)

RADAR or DME required.	ALSF-1	MISSED APPROACH: Climbing to 2000, intercept SSC TACAN R-223 to PINIE and hold.
▼ * When ALS inop, increase RVR to 40 and vis to ¾ mile. ** When ALS inop, increase CAT AB RVR to 55 and vis to 1 mile, CAT CDE vis to 1¼ miles.	A1	

ATIS ★	SHAW APP CON	SHAW TOWER ★	GND CON	CLNC DEL
132.125 270.1	125.4 318.1	126.65 254.25	121.8 289.4	121.8 289.4



CATEGORY	A	B	C	D	E
S-ILS 22R*	440/24	200	(200-½)		
S-LOC 22R**	660/24	420 (500-½)	660/40	420 (500-¾)	
SIDESTEP ** 22L	660-1	425 (500-1)	660-1¼	425 (500-1¼)	
CIRCLING	820-1 579 (600-1)	880-1 639 (700-1)	1000-2¼ 759 (800-2¼)	1000-2½ 759 (800-2½)	1000-2¾ 759 (800-2¾)



ILS or LOC Y RWY 22R

SE-2, 10 JUL 2025 to 07 AUG 2025

SE-2, 10 JUL 2025 to 07 AUG 2025