

HI-TACAN Z RWY 4L

[USAF]

SHAW AFB (KSSC)

RADAR required when R-6002 active.

ALSF-1

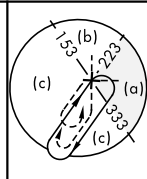
MISSED APPROACH: Climbing to 2000, intercept
SSC TACAN R-042 to GABLE and hold.

T * When ALS inop, increase vis to 15/8 miles.

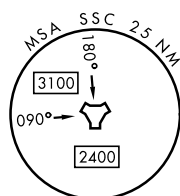
ATIS ★ 132.125 270.1	SHAW APP CON 125.4 318.1	SHAW TOWER ★ 126.65 254.25	GND CON 121.8 289.4	CLNC DEL 121.8 289.4
-------------------------	-----------------------------	-------------------------------	------------------------	-------------------------

When VGSI inop, procedure NA at night.
Terrain 242' MSL, 200' prior to threshold,
816' left of course.

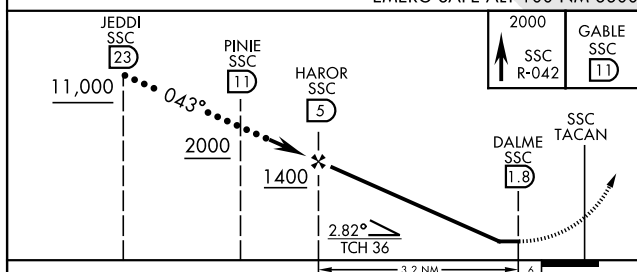
USAF Only: When VGSI inop, straight in
Rwy 4L authorized at night with MAJCOM
A3 approval.




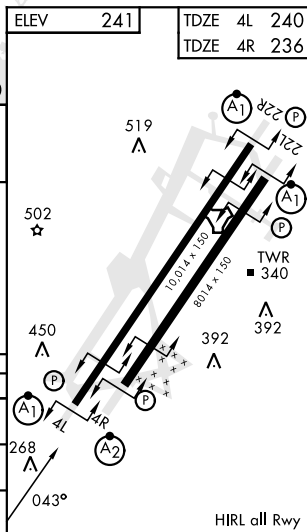
CAUTION: When Rwy 22L VGSI inop, circling to Rwy 22L NA at night. Terrain 239' MSL, 200' prior to threshold, 200' right of course.



EMERG SAFE ALT 100 NM 3800



CATEGORY	C	D	E
S-4L *	800/60	560 (600-1%)	
SIDESTEP 4R *	800-1 $\frac{3}{8}$	564 (600-1%)	
 CIRCLING	1000-2 $\frac{1}{4}$ 759 (800-2 $\frac{1}{4}$)	1000-2 $\frac{1}{2}$ 759 (800-2 $\frac{1}{2}$)	1000-2 $\frac{3}{4}$ 759 (800-2 $\frac{3}{4}$)



SUMTER, SOUTH CAROLINA

33° 58'N-80° 28'W

SHAW AFB (KSSC)

Amdt 1 10OCT19

HI-TACAN Z RWY 4L