

HI-TACAN Z RWY 22R

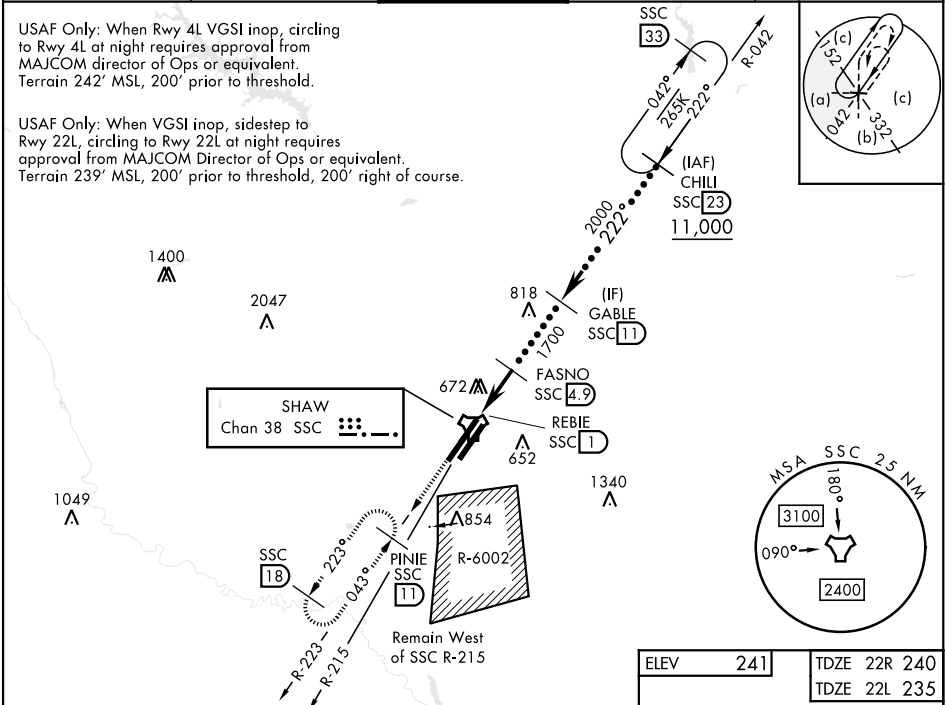
TACAN SSC Chan 38	APCH CRS 222°	22R Rwy Ldg 10,014 TDZE 240 Arpt Elev 241	22L 8014 235 241
----------------------	------------------	--	---------------------------

[USAF]

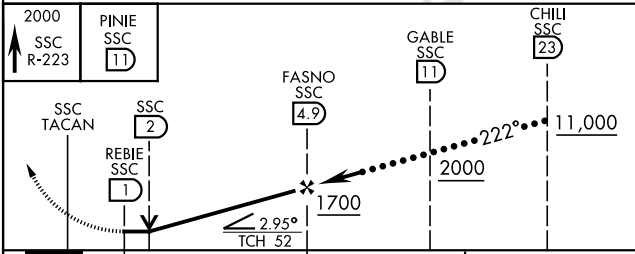
SHAW AFB (KSSC)

RADAR required when R-6002 active.		ALSF-1	MISSED APPROACH: Climbing to 2000, intercept SSC TACAN R-223 to PINIE and hold.
* When ALS inop, increase vis to 1½ miles. ** When ALS inop, increase vis to 1¾ miles.		A1	

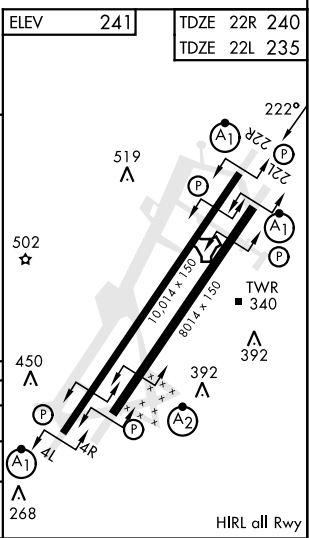
ATIS ★ 132.125 270.1	SHAW APP CON 125.4 318.1	SHAW TOWER ★ 126.65 254.25	GND CON 121.8 289.4	CLNC DEL 121.8 289.4
-------------------------	-----------------------------	-------------------------------	------------------------	-------------------------



EMERG SAFE ALT 100 NM 3800



CATEGORY	C	D	E
S-22R *	760/55	520 (600-1)	
SIDESTEP 22L **	760/55	505 (600-1)	
CIRCLING	1000-2¼ 759 (800-2¼)	1000-2½ 759 (800-2½)	1000-2¾ 759 (800-2¾)



HI-TACAN Z RWY 22R

SE-2, 10 JUL 2025 to 07 AUG 2025