

# HI-ILS or LOC Z RWY 22R

LOC I-JWU	APCH CRS	22R	22L
<b>108.7</b>	<b>223°</b>	Rwy Idg <b>10,014</b>	<b>8014</b>
		TDZE <b>240</b>	<b>235</b>
		Arpt Elev <b>241</b>	<b>241</b>

[USAF]

SHAW AFB (KSSC)

RADAR or DME required. RADAR required when R-6002 active.

- ▼ \* When ALS inop, increase RVR to 40 and vis to  $\frac{3}{4}$  mile.  
\*\* When ALS inop, increase vis to 1  $\frac{1}{4}$  miles.



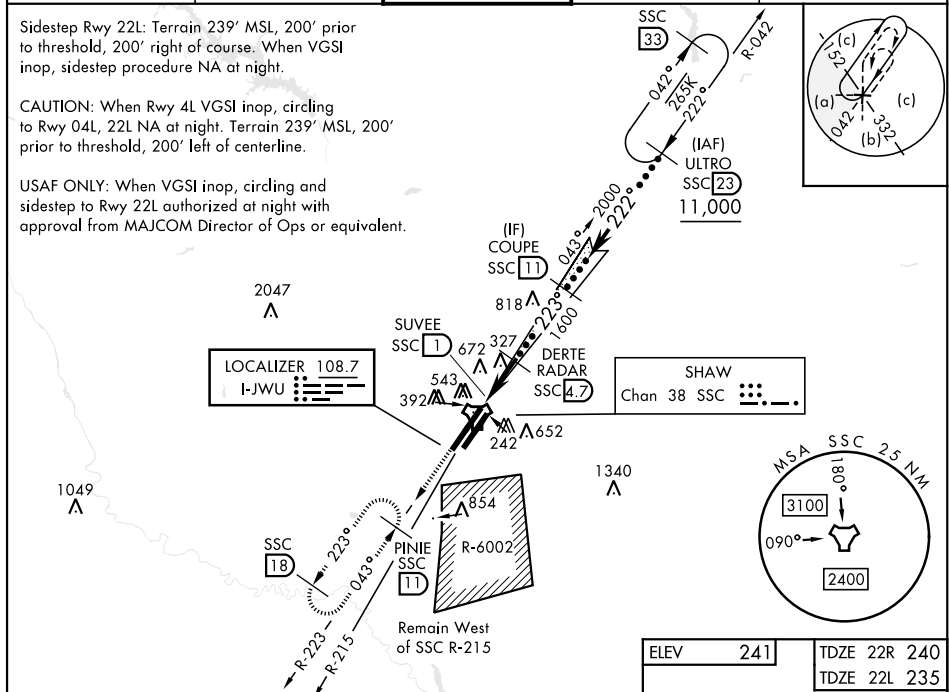
MISSED APPROACH: Climbing to 2000, intercept SSC TACAN R-223 to PINIE and hold.

ATIS ★	SHAW APP CON	SHAW TOWER ★	GND CON	CLNC DEL
<b>132.125 270.1</b>	<b>125.4 318.1</b>	<b>126.65 254.25</b>	<b>121.8 289.4</b>	<b>121.8 289.4</b>

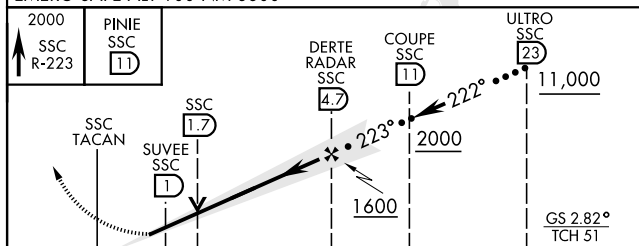
Sidestep Rwy 22L: Terrain 239' MSL, 200' prior to threshold, 200' right of course. When VGSI inop, sidestep procedure NA at night.

CAUTION: When Rwy 4L VGSI inop, circling to Rwy 04L, 22L NA at night. Terrain 239' MSL, 200' prior to threshold, 200' left of centerline.

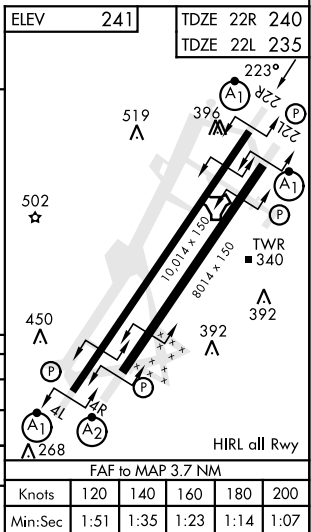
USAF ONLY: When VGSI inop, circling and sidestep to Rwy 22L authorized at night with approval from MAJCOM Director of Ops or equivalent.



EMERG SAFE ALT 100 NM 3800



CATEGORY	C	D	E
S-ILS 22R *	440/24	200 (200- $\frac{1}{2}$ )	
S-LOC 22R **	660/40	420 (500- $\frac{3}{4}$ )	
SIDESTEP **	660-1 $\frac{1}{4}$	425 (500-1 $\frac{1}{4}$ )	
22L			
CIRCLING	1000-2 $\frac{1}{4}$ 759 (800-2 $\frac{1}{4}$ )	1000-2 $\frac{1}{2}$ 759 (800-2 $\frac{1}{2}$ )	1000-2 $\frac{3}{4}$ 759 (800-2 $\frac{3}{4}$ )



# HI-ILS or LOC Z RWY 22R