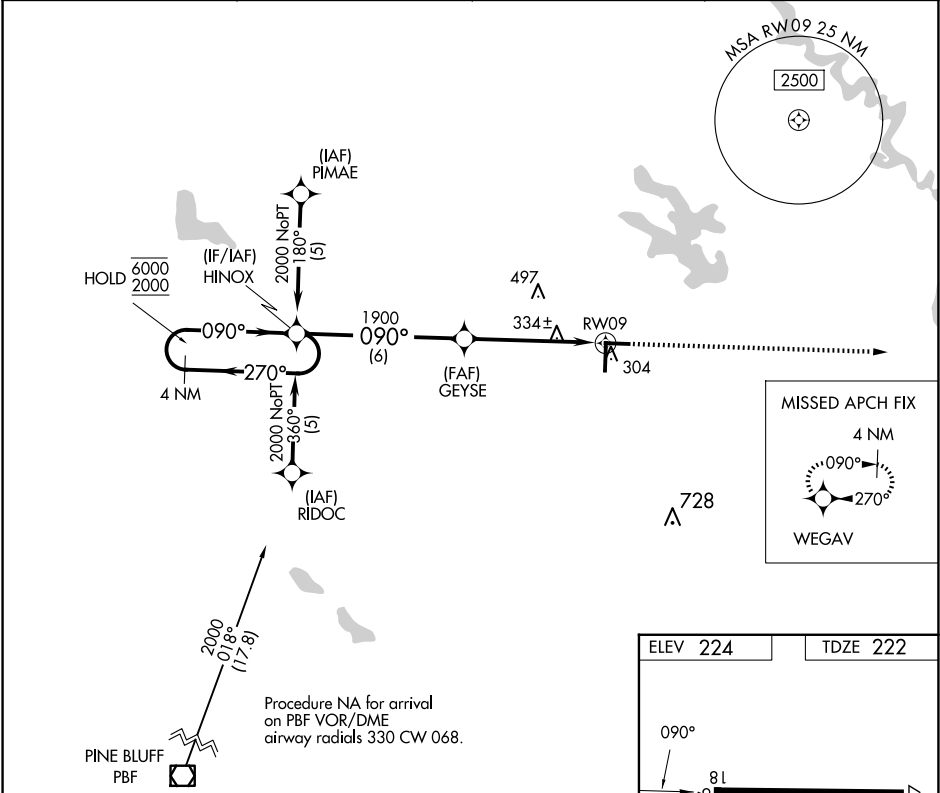


APP CRS	Rwy Idg	5002
090°	TDZE	222
	Apt Elev	224

RNAV (GPS) RWY 9

STUTT GART MUNI CARL HUMPHREY FLD (SGT')

RNP APCH - GPS.		MISSED APPROACH: Climb to 2000 direct WEGAV and hold.	
▼ ▲ Rwy 9 helicopter visibility reduction below ¾ SM NA.			
AWOS-3PT 119.025	LITTLE ROCK APP CON 135.4 353.6	CLNC DEL 123.7	UNICOM 122.8 (CTAF) 0



HINOX		GEYSE		2000	WEGAV
4 NM Holding Pattern		1900		1 NM to RWY09	
6000 2000		3.05° TCH 45		RWY09	
270°		090°		090°	
090°		090°		090°	
6 NM		4 NM		1.0	
CATEGORY	A	B	C	D	
LNNAV MDA	600-1		378 (400-1)	600-1¼ 378 (400-1¼)	
CIRCLING	660-1 436 (500-1)	680-1 456 (500-1)	760-1½ 536 (600-1½)	860-2 636 (700-2)	
STUTT GART, ARKANSAS		STUTT GART MUNI CARL HUMPHREY FLD (SGT')		MIRL Rwy 18-36 and 9-27 0	
Orig-E 22FEB24		34°36'N-91°35'W		REIL Rwy 18 and 27 0	

RNAV (GPS) RWY 9