

WAAS CH 97311 W36A	APP CRS 360°	Rwy Idg 6015 TDZE 224 Apt Elev 224
----------------------------------------	------------------------	---------------------------------------------------------------

RNAV (GPS) RWY 36

STUTTGART MUNI CARL HUMPHREY FLD (SGT)

RNP APCH

▼

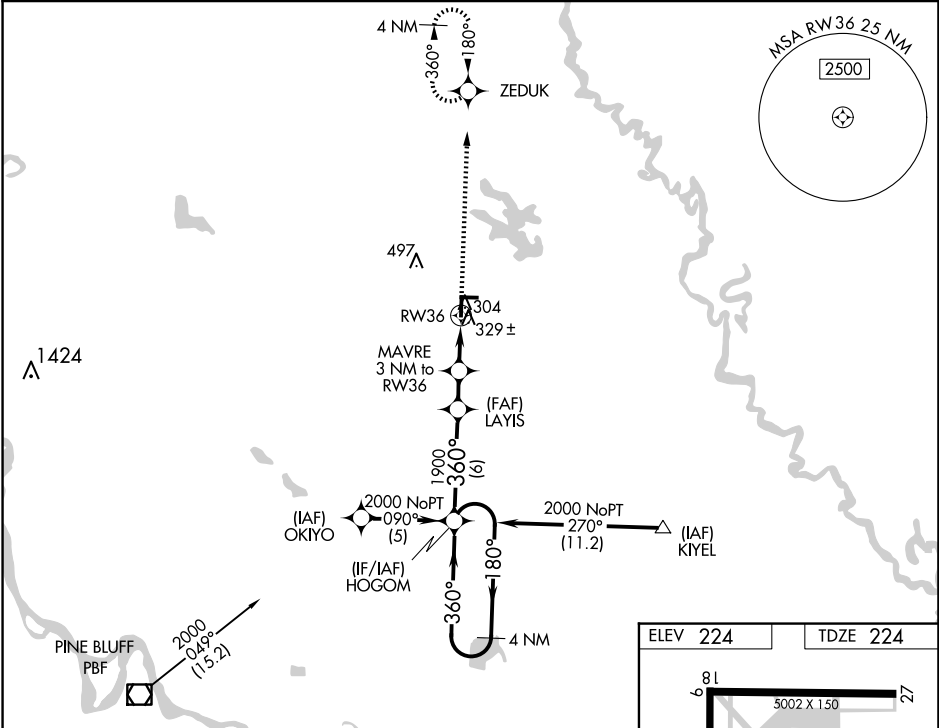
▲

When local altimeter setting not received, use Bill and Hillary Clinton Ntl/Adams Fld altimeter setting; increase LPV DA to 556 and all visibilities ½ SM; increase all MDAs 100 feet and visibility Cats C and D ¼ SM. For inop MALSF when using Bill and Hillary Clinton Ntl/Adams Fld altimeter setting, increase LPV all Cats visibility to 1½ mile. VDP NA when using Bill and Hillary Clinton Ntl/Adams Fld altimeter setting.

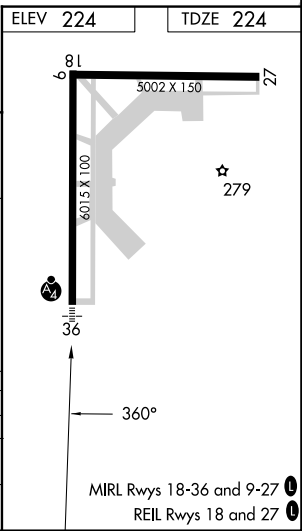
MALSF

MISSED APPROACH:
Climb to 2000 direct ZEDUK and hold.

AWOS-3PT 119.025	LITTLE ROCK APP CON 135.4 353.6	CLNC DEL 123.7	UNICOM 122.8 (CTAF) 0
----------------------------	-------------------------------------------	--------------------------	---------------------------------



HOGOM				
4 NM Holding Pattern				
2000 ← 180° 360° →				
GP 3.00° TCH 50				
1900				
*1220				
6 NM — 2 NM — 1.9 NM — 1.1 NM				
LAYIS				
MAVRE 3 NM to RW36				
*1.1 NM to RW36				
RW36				
CATEGORY	A	B	C	D
LPV DA	474-¾ 250 (300-¾)			
LNNAV MDA	620-¾ 396 (400-¾)			
CIRCLING	660-1	680-1	760-1½	860-2
	436 (500-1)	456 (500-1)	536 (600-1½)	636 (700-2)



SC-1, 10 JUL 2025 to 07 AUG 2025

SC-1, 10 JUL 2025 to 07 AUG 2025