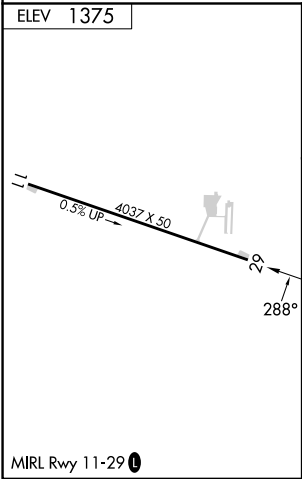
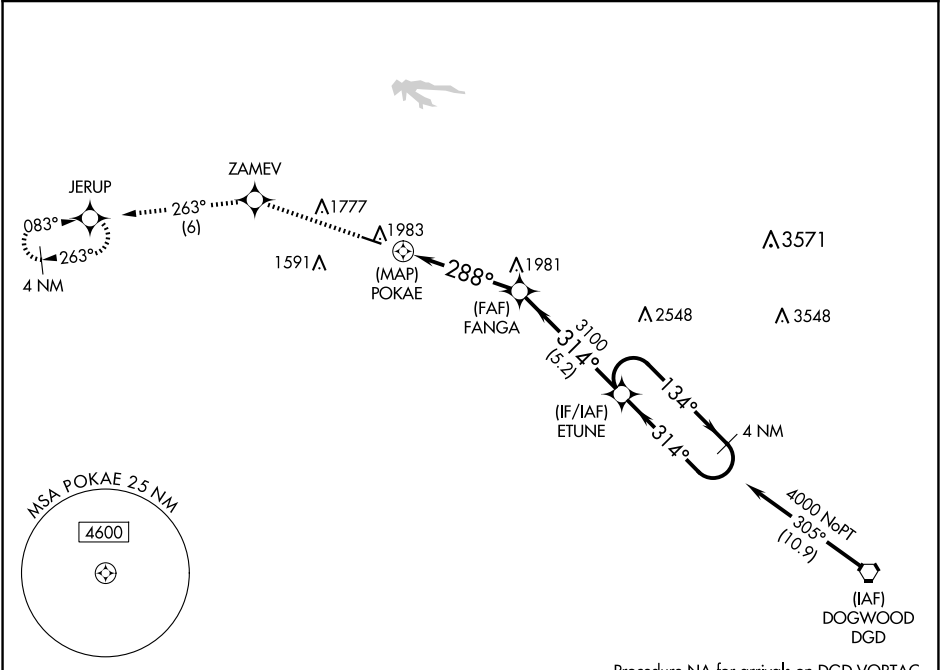


APP CRS	Rwy Idg	N/A
288°	TDZE	N/A
	Apt Elev	1375

RNAV (GPS)-B  
DOWNTOWN (3DW)

<p><b>NA</b></p> <p>Circling NA north of Rwy 11-29. DME/DME RNP-0.3 NA. Use Springfield-Branson Ntl altimeter setting; when not received, use Branson West altimeter setting and increase all MDA 60 feet. Procedure NA at night. Helicopter visibility reduction below 1 SM NA.</p>	<p>MISSED APPROACH: Climb to 4000 direct ZAMEV and track 263° to JERUP and hold.</p>
--	--

SPRINGFIELD APP CON 124.95 353.925	UNICOM 122.8 (CTAF) <b>0</b>
---------------------------------------	---------------------------------



4000	ZAMEV	tr 263°	JERUP	Visual Segment - Obstacles.
				ETUNE
				4 NM Holding Pattern
				134°→ 4000
				← 314°
				3100
				288°
				POKAE
				0.9 NM
				4.4 NM
				5.2 NM
CATEGORY	A	B	C	D
<b>C</b> CIRCLING	2280-1¼	905 (1000-1¼)	NA	

NC-3, 10 JUL 2025 to 07 AUG 2025

NC-3, 10 JUL 2025 to 07 AUG 2025