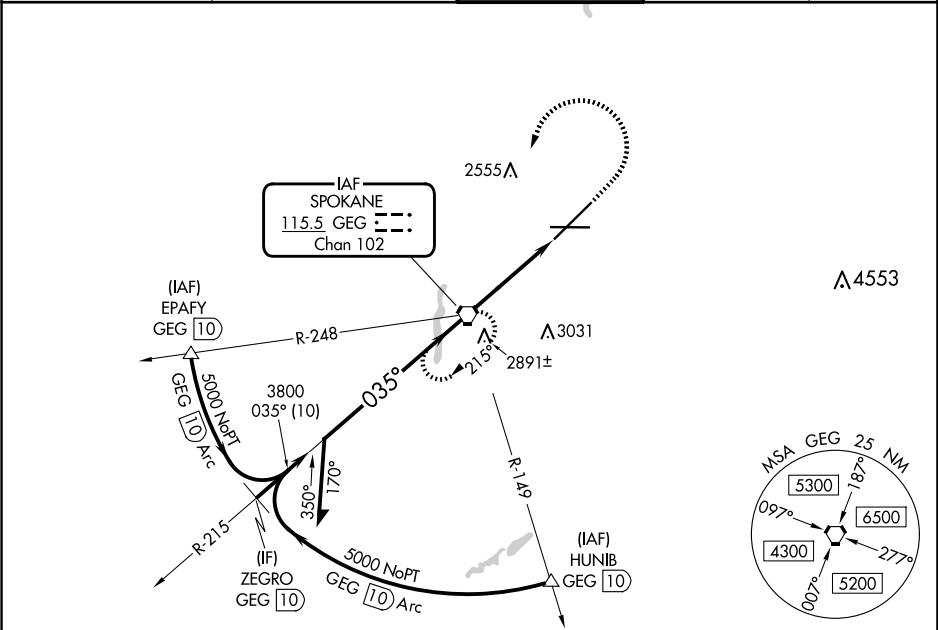


| | | | |
|------------|---------|----------|-------|
| VORTAC GEG | APP CRS | Rwy Ldg | 11002 |
| 115.5 | 035° | TDZE | 2385 |
| Chan 102 | | Apt Elev | 2385 |

VOR RWY 3

SPOKANE INTL (GEG)

| | | | | | |
|---|--|-----------------------------------|--|----------|--|
| <div><div><div></div><div></div></div><div></div></div> | Circling NA for Cat E southeast of Rwy 3-21. For inop ALS, increase S-3 Cat E visibility to 1¼ SM. | ALSF-2 | MISSED APPROACH: Climb to 3200 then climbing left turn to 4200 direct GEG VORTAC and hold, continue climb-in-hold to 4200. | | |
| | | <div><div></div><div></div></div> | | | |
| ATIS | SPOKANE APP CON | SPOKANE TOWER | GND CON | CLNC DEL | |
| 124.325 254.375 | 123.75 282.25 (205°-025°) 133.35 263.0 (026°-204°) | 118.3 278.3 | 121.9 348.6 | 127.55 | |



ELEV 2385

TDZE 2385

VGSI and descent angles not coincident (VGSI Angle 3.00/TCH 69).

Remain within 15 NM

4200

215°

035°

3800

3.10° TCH 55

2.5 NM

1.7 NM

3200

4200

GEG

GEG 2.5

GEG 4.1

| CATEGORY | A | B | C | D | E |
|----------|---------|-------------|-------------------------|--------------|--------------|
| S-3 | 2980/24 | 595 (600-½) | 2980-1¼ | 595 (600-1¼) | |
| CIRCLING | 2980-1 | 595 (600-1) | 3180-2¼ 795 (800-2¼) | 3380-3 | 995 (1000-3) |

FAF to MAP 4.1 NM

| | | | | | |
|---------|------|------|------|------|------|
| Knots | 60 | 90 | 120 | 150 | 180 |
| Min:Sec | 4:06 | 2:44 | 2:03 | 1:38 | 1:22 |