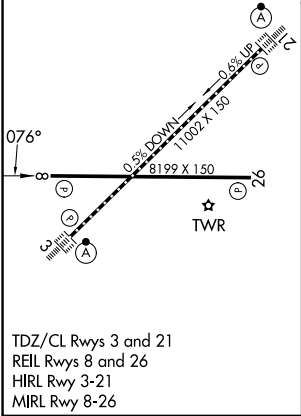
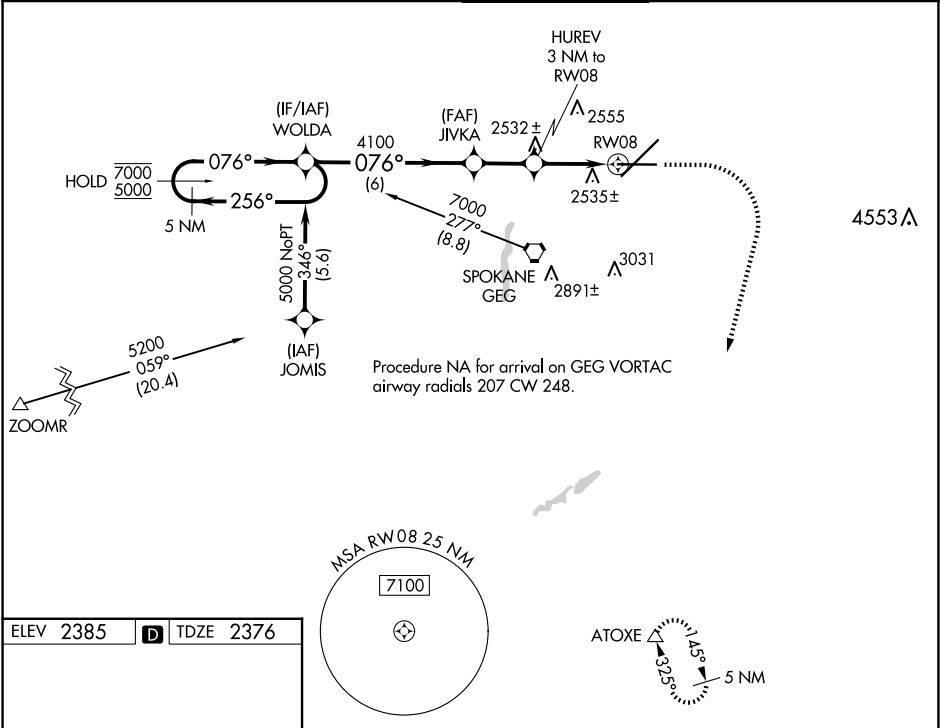


WAAS CH <b>48801</b> <b>W08A</b>	APP CRS <b>076°</b>	Rwy Ldg TDZE Apt Elev	<b>8199</b> <b>2376</b> <b>2385</b>
--	------------------------	-----------------------------	---

RNAV (GPS) Y RWY 8  
SPOKANE INTL (GEG)

RNP APCH. ▼ For uncompensated Baro-VNAV systems, LNAV/VNAV NA below -18°C or above 52°C. ▲	MISSED APPROACH: Climb to 2900, then climbing right turn to 6000 direct ATOXE and hold.
--	---

ATIS <b>124.325 254.375</b>	SPOKANE APP CON <b>123.75 282.25</b> (205°-025°) <b>133.35 263.0</b> (026°-204°)	SPOKANE TOWER <b>118.3 278.3</b>	GND CON <b>121.9 348.6</b>	CLNC DEL <b>127.55</b>
--------------------------------	--	-------------------------------------	-------------------------------	---------------------------



VGSI and RNAV glidepath not coincident (VGSI Angle 3.00/TCH 45).				
5 NM Holding Pattern				
WOLDA				
JIVKA				
HUREV 3 NM to RW08				
1.2 NM to RW08				
RW08				
6 NM				
2.1 NM				
1.8 NM				
1.2				
CATEGORY	A	B	C	D
LPV DA	2576-¾ 200 (200-¾)			
LNAV/VNAV DA	2834-1½ 458 (500-1½)			
LNAV MDA	2800-1	424 (500-1)	2800-1¼	424 (500-1¼)