

WAAS CH 81920 W03A	APP CRS 031°	Rwy Ldg 11002 TDZE 2385 Apt Elev 2385
----------------------------------------	------------------------	------------------------------------------------------------------

RNAV (GPS) Y RWY 3
SPOKANE INTL (GEG)

RNP APCH.

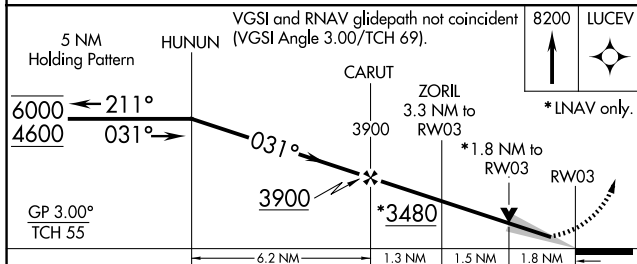
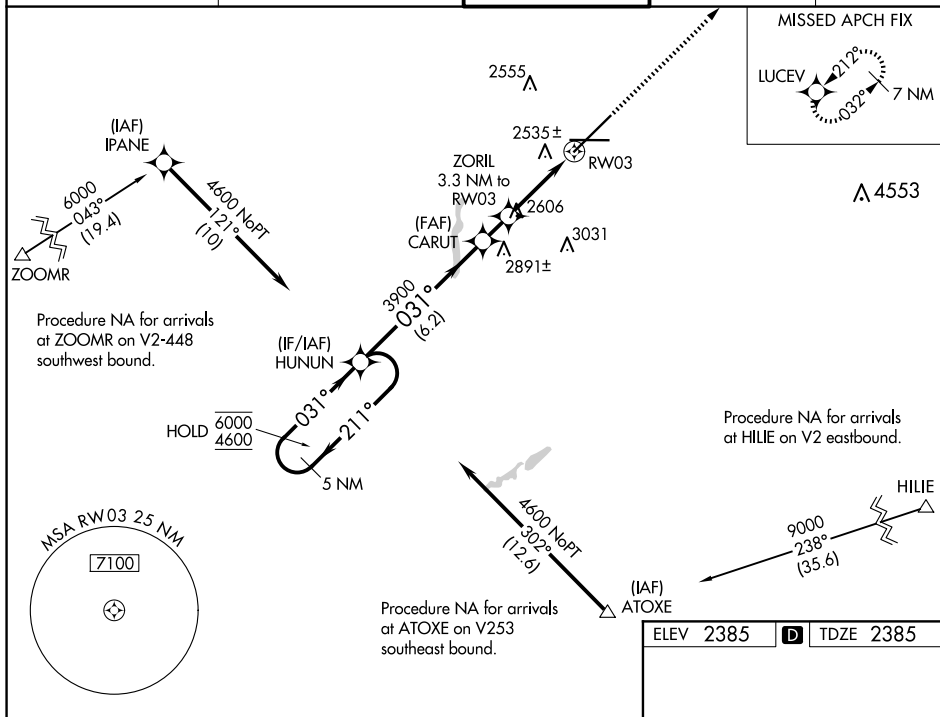
⚠ For uncompensated Baro-VNAV systems, LNAV/VNAV NA below -18°C or above 53°C. For inop ALS increase LNAV/VNAV all Cats visibility to 1½ SM and increase LNAV Cats C and D visibility to 1¾ SM.

ALSF-2

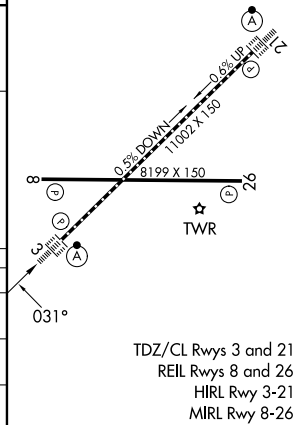


MISSED APPROACH: Climb to 8200 direct LUCEV and hold, continue climb-in-hold to 8200.

ATIS	SPOKANE APP CON	SPOKANE TOWER	GND CON	CLNC DEL
124.325 254.375	123.75 282.25 (205°-025°) 133.35 263.0 (026°-204°)	118.3 278.3	121.9 348.6	127.55



CATEGORY		A	B	C	D
LPV	DA	2585/18 200 (200-½)			
LNAV/ VNAV	DA	2962-1½ 577 (600-1½)			
LNAV	MDA	3020/24 635 (700-½)	3020/60 635 (700-1½)		3020-1½ 635 (700-1½)



RNAV (GPS) Y RWY 3