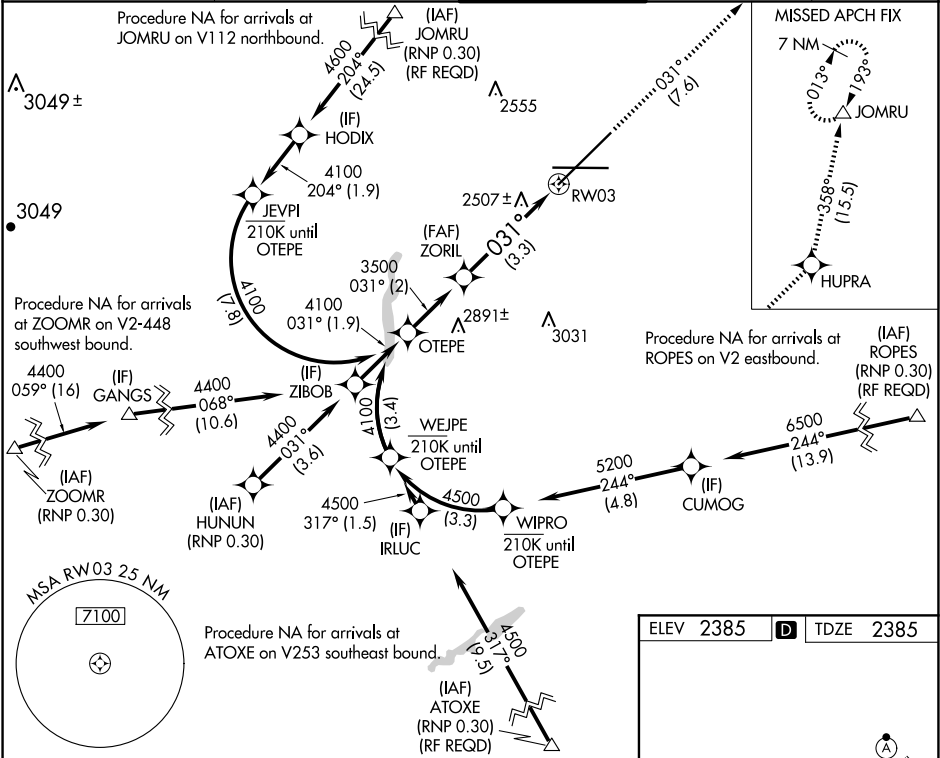


APP CRS	Rwy Ldg	11002
031°	TDZE	2385
	Apt Elev	2385

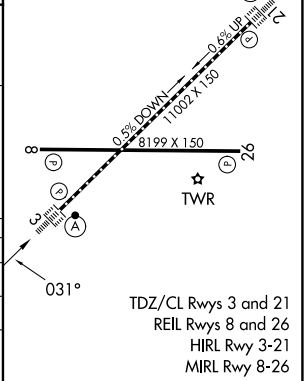
RNAV (RNP) Z RWY 3  
SPOKANE INTL (GEG)

RNP AR APCH.	ALSF-2	MISSED APPROACH: Climb to 7000 on track 031° to HUPRA and on track 358° to JOMRU and hold.
For uncompensated Baro-VNAV systems, procedure NA below -18°C or above 53°C.		

ATIS 124.325 254.375	SPOKANE APP CON 123.75 282.25 (205°-025°) 133.35 263.0 (026°-204°)	SPOKANE TOWER 118.3 278.3	GND CON 121.9 348.6	CLNC DEL 127.55
-------------------------	--	------------------------------	------------------------	--------------------



VGSI and RNAV glidepath not coincident (VGSI Angle 3.00/TCH 69°)	7000 HUPRA tr 031°	HUPRA	tr 358°	JOMRU
See planview for multiple IF locations.				
CATEGORY	A	B	C	D
RNP 0.11 DA	2716/26 331 (400-½)			
RNP 0.30 DA	2842/45 457 (500-¾)			
AUTHORIZATION REQUIRED				



NW-1, 10 JUL 2025 to 07 AUG 2025

NW-1, 10 JUL 2025 to 07 AUG 2025