

LOC/DME I-OLJ <u>111.1</u> Chan 48	APP CRS 031°	Rwy Ldg 11002 TDZE 2385 Apt Elev 2385
--	------------------------	--

ILS RWY 3 (SA CAT I)
SPOKANE INTL (GEG)

T

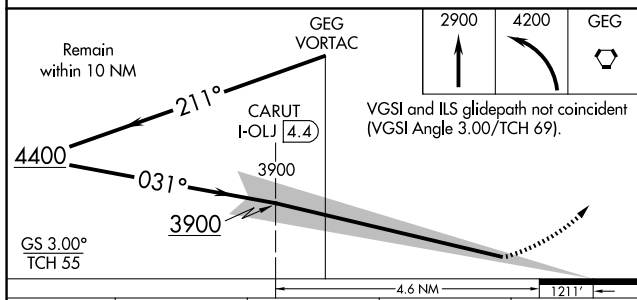
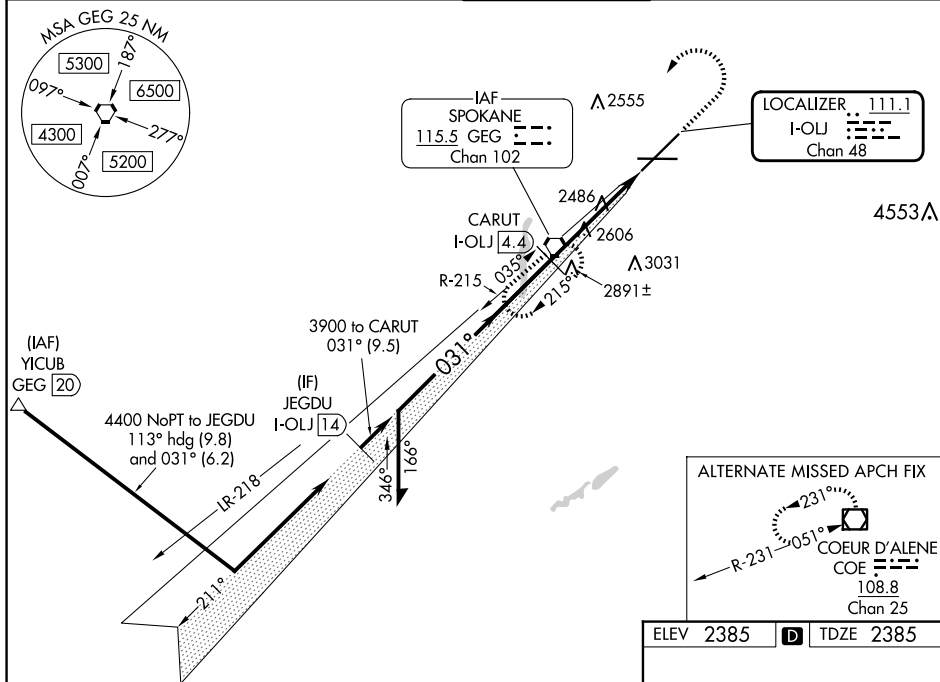
Requires specific OPSPEC, MSPEC, or LOA approval.

ALSF-2



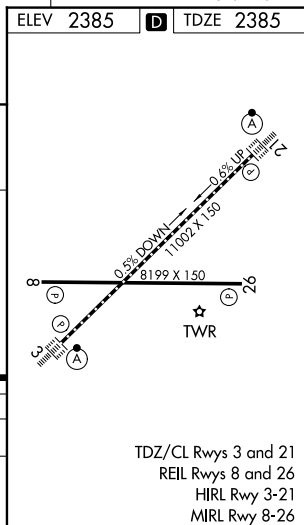
MISSED APPROACH: Climb to 2900 then climbing left turn to 4200 direct GEG VORTAC and hold, continue climb-in-hold to 4200.

ATIS	SPOKANE APP CON	SPOKANE TOWER	GND CON	CLNC DEL
124.325 254.375	123.75 282.25 (205°-025°) 133.35 263.0 (026°-204°)	118.3 278.3	121.9 348.6	127.55



CATEGORY	A	B	C	D
S-ILS 3	RA 154/14 150 DA 2535			

SA CATEGORY I ILS - SPECIAL AIRCREW
& AIRCRAFT CERTIFICATION REQUIRED



ILS RWY 3 (SA CAT I)