
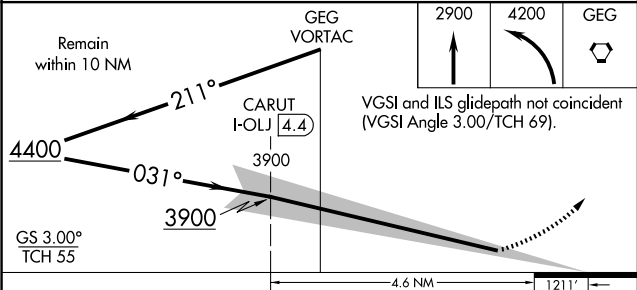
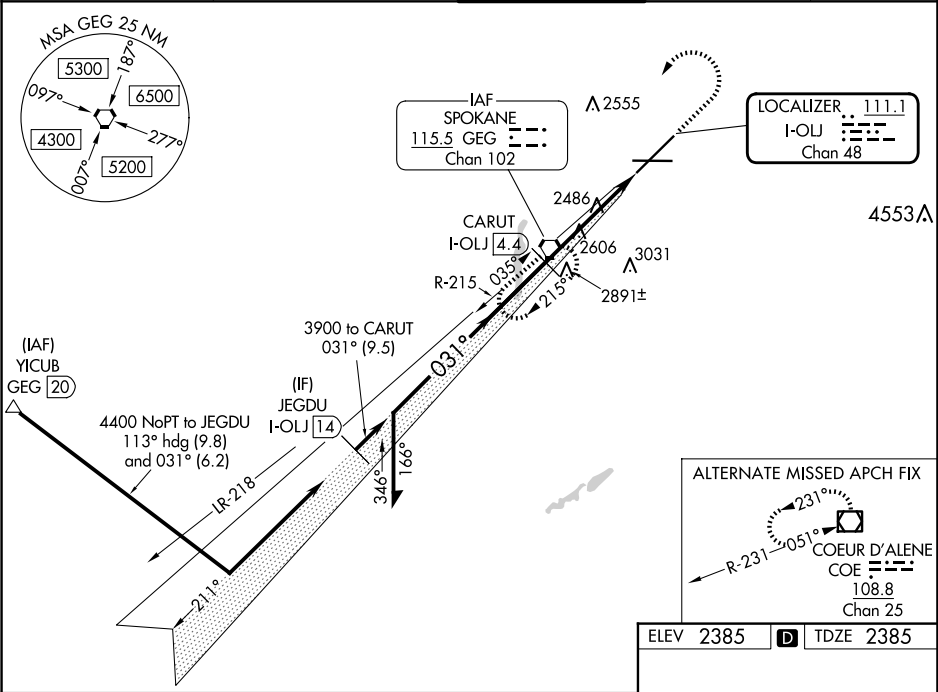


LOC/DME I-OLJ <b>111.1</b> Chan <b>48</b>	APP CRS <b>031°</b>	Rwy Ldg TDZE <b>2385</b> Apt Elev <b>2385</b>
---	------------------------	---

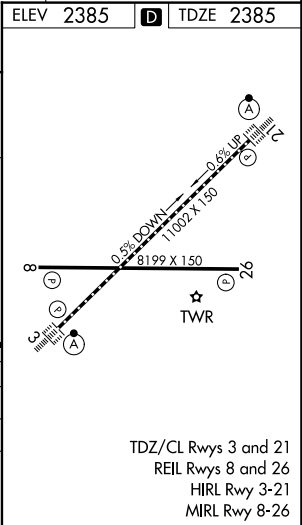
ILS RWY 3 (CAT II & III)  
SPOKANE INTL (GEG)

V	CAT II: RVR 1000 authorized with specific OPSPEC, MSPEC, or LOA approval and use of autoland or HUD to touchdown.		ALS-F-2 	MISSED APPROACH: Climb to 2900 then climbing left turn to 4200 direct GEG VORTAC and hold, continue climb-in-hold to 4200.		
	ATIS 124.325 254.375	SPOKANE APP CON 123.75 282.25 (205°-025°) 133.35 263.0 (026°-204°)	SPOKANE TOWER 118.3 278.3	GND CON 121.9 348.6	CLNC DEL 127.55	



CATEGORY	A	B	C	D
S-ILS 3	CAT II	RA 104/12	100	DA 2485
S-ILS 3	CAT III	RVR 03		

**CATEGORY II & III ILS - SPECIAL AIRCREW & AIRCRAFT CERTIFICATION REQUIRED**



NW-1, 10 JUL 2025 to 07 AUG 2025

NW-1, 10 JUL 2025 to 07 AUG 2025