

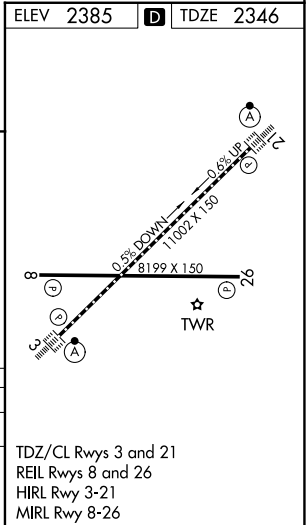
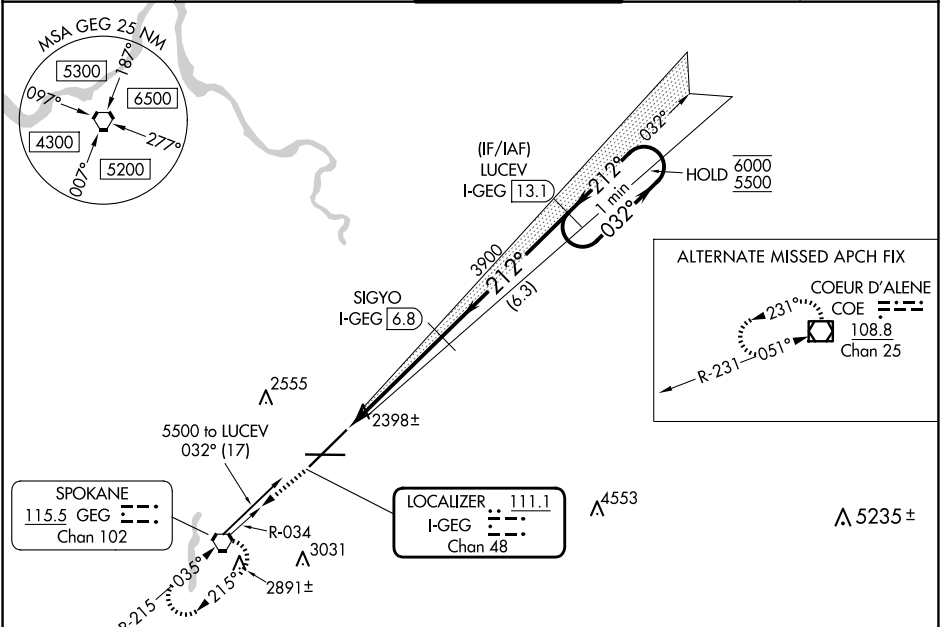
LOC/DME I-GEG	APP CRS	Rwy Ldg	11002
111.1	212°	TDZE	2346
Chan 48		Apt Elev	2385

ILS RWY 21 (SA CAT I)

SPOKANE INTL (GEG)

DME required.	ALSF-2	MISSED APPROACH: Climb to 4200 on GEG VORTAC R-034 to GEG VORTAC and hold, continue climb-in-hold to 4200.
Requires specific OPSPEC, MSPEC, or LOA approval.		

ATIS	SPOKANE APP CON	SPOKANE TOWER	GND CON	CLNC DEL
124.325 254.375	123.75 282.25 (205°-025°) 133.35 263.0 (026°-204°)	118.3 278.3	121.9 348.6	127.55



4200	GEG	VGSI and ILS glidepath not coincident (VGSI Angle 3.00/TCH 73).	LUCEV I-GEG (13.1)	One Minute Holding Pattern
GEG R-034			SIGYO I-GEG (6.8)	
			3900	032°
			212°	6000
			3900	5500
			GS 3.00°	TCH 55
			912'	4.8 NM
			6.3 NM	
CATEGORY	A	B	C	D
S-ILS 21	RA 197/14 150 DA 2496			
SA CATEGORY I ILS - SPECIAL AIRCREW & AIRCRAFT CERTIFICATION REQUIRED				