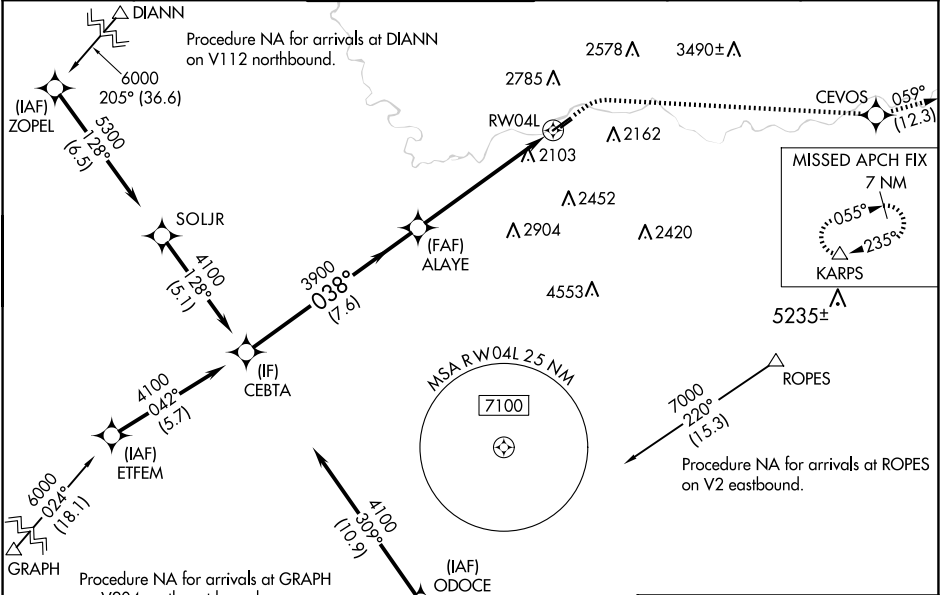


WAAS CH 65931 W04A	APP CRS 038°	Rwy Ldg TDZE 1949 Apt Elev 1957
--	------------------------	---

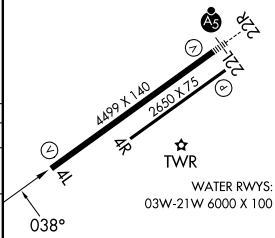
RNAV (GPS) RWY 4L
FELTS FLD (S'F'F')

RNP APCH - GPS.	MISSED APPROACH: Climb to 2850 then climbing right turn to 8000 direct CEVOS and on track 059° to KARPS and hold, continue climb-in-hold to 8000. * LPV missed approach requires minimum climb of 330 feet per NM to 5400.
⚠ -16°C	Circling to Rwy 22L NA at night. Circling NA northwest of Rwy 4L-22R. Rwy 4L helicopter visibility reduction below ¾ SM NA. For uncompensated Baro-VNAV systems, LNAV/VNAV NA below -18°C or above 54°C.

ATIS 120.55	SPOKANE APP CON 133.35 263.0	FELTS TOWER ★ 132.5 (CTAF) 239.025	GND CON 121.7	CLNC DEL 121.7	UNICOM 122.95
-----------------------	--	--	-------------------------	--------------------------	-------------------------



VGSI and RNAV glidepath not coincident (VGSI Angle 3.00/TCH 50).		2850	8000	CEVOS	tr 059°	KARPS
CEBTA		ALAYE				
4100		3900	2.6 NM to RW04L	RW04L		
GP 3.00° TCH 56						
7.6 NM		3.4 NM	2.6 NM			
CATEGORY	A	B	C	D		
LPV DA*	2203-¾		254 (300-¾)			
LPV DA	2529-1⅝		580 (600-1⅝)			
LNAV/VNAV DA	2779-2½		830 (900-2½)			
LNAV MDA	2820-1 871 (900-1)	2820-1¼ 871 (900-1¼)	2820-2½	871 (900-2½)		
CIRCLING	2820-1¼	863 (900-1¼)	3100-3 1143 (1200-3)	3360-3 1403 (1500-3)		



NW-1, 10 JUL 2025 to 07 AUG 2025

NW-1, 10 JUL 2025 to 07 AUG 2025